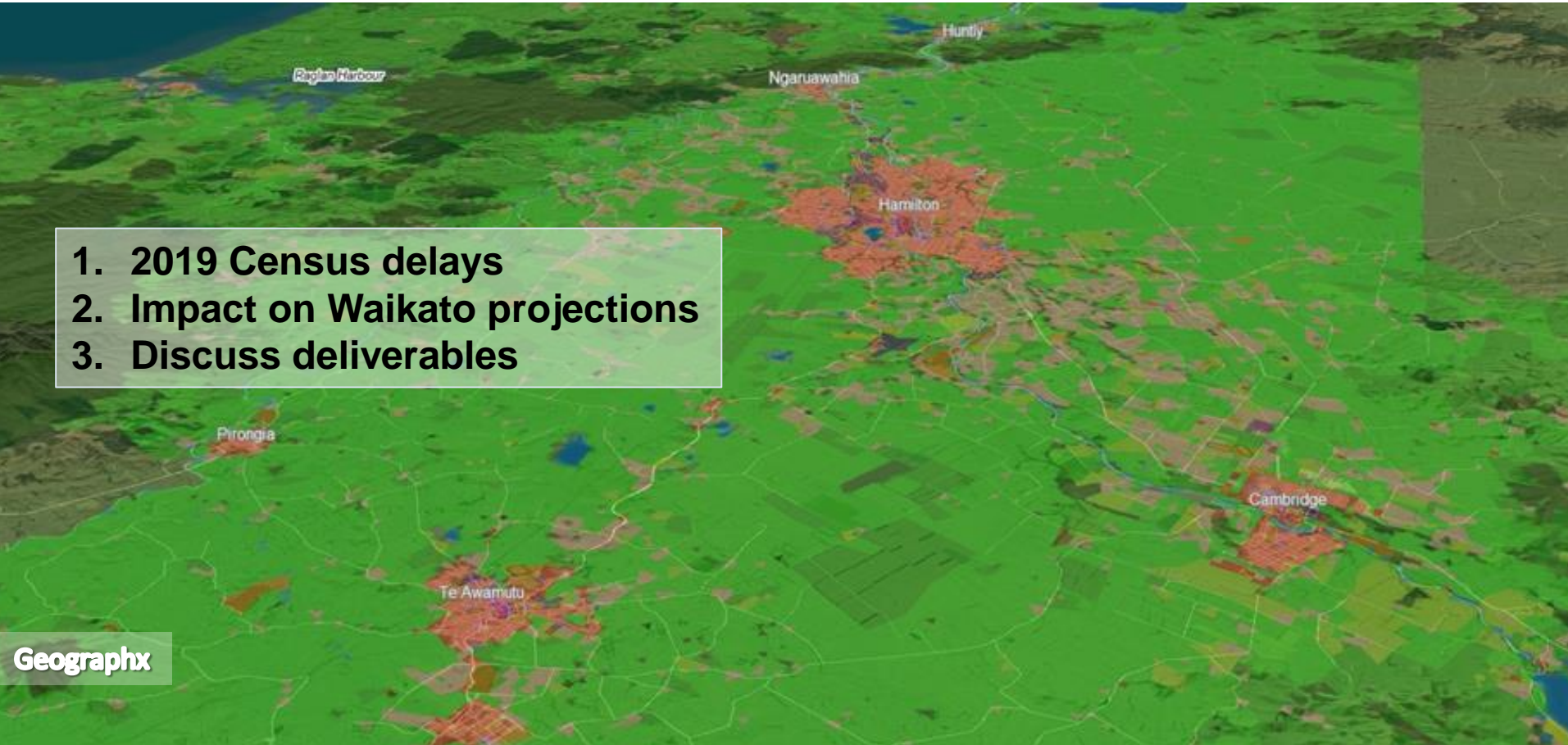


Waikato Projections Working Group

www.creatingfutures.org.nz/waikato-projections-demographic-and-economic/projections-working-group



Projections for **population, employment and land use** (2018 to 2068)

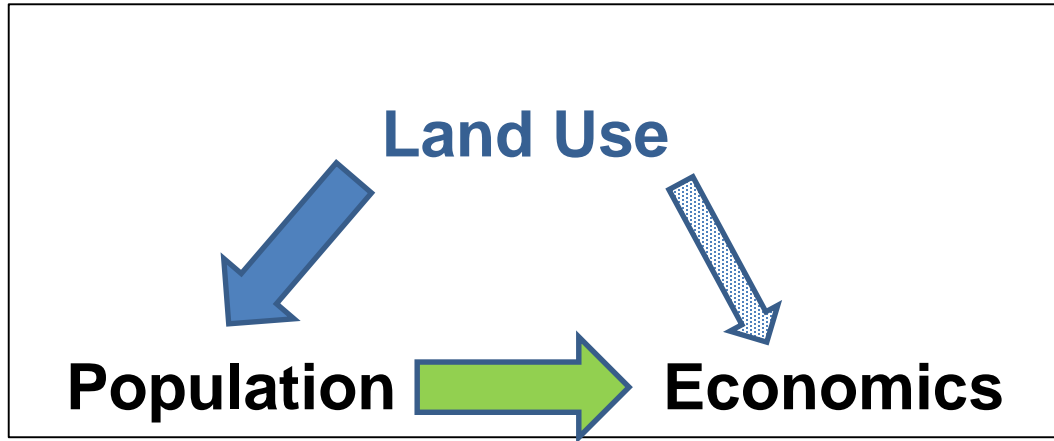
Regional, by TA and by SA2 (new statistical census units)

2018 Census

About 10% of New Zealanders didn't fill out their Census forms:

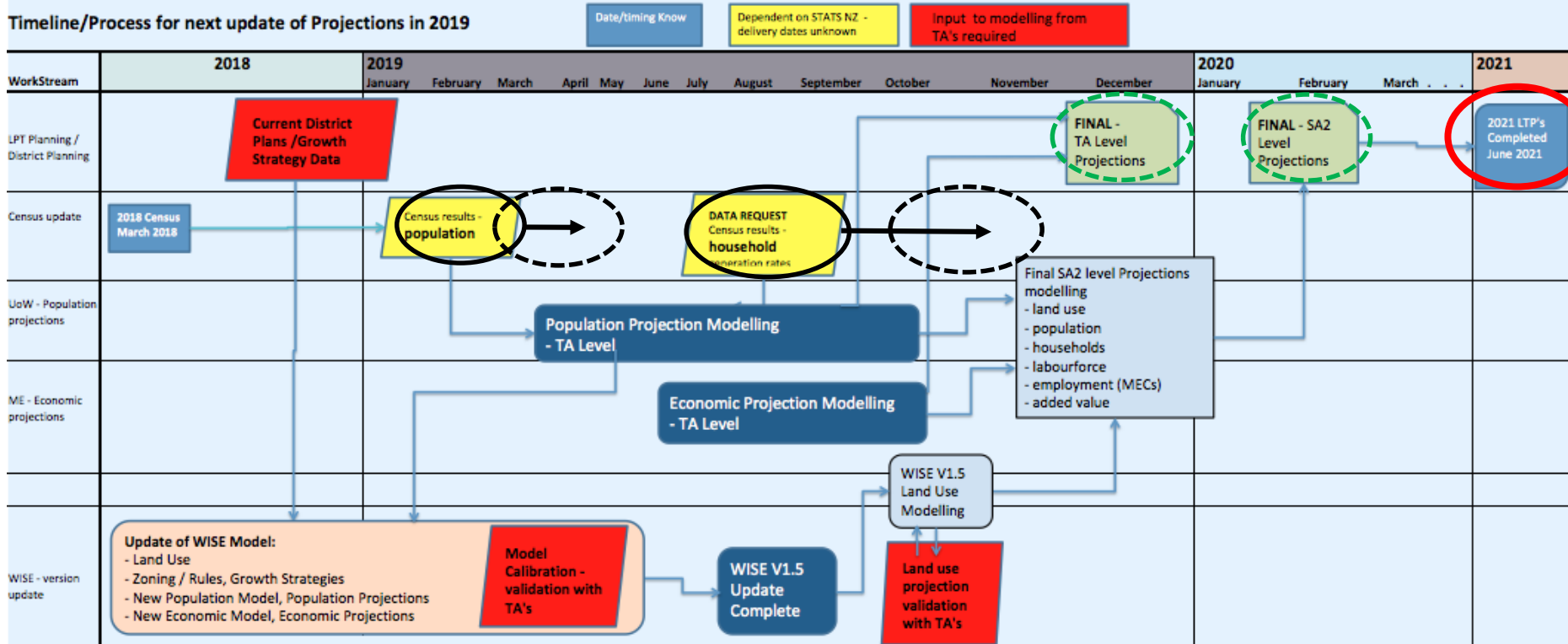
- Response rate 2018 of 90% (82% online)
 - Response rate 2013 was 94.5%
 - Missing forms unequally distributed
 - More work needed to fill gaps (imputation)
 - Key challenges: family/household; small areas
- **Delays releasing Census data (largely unknown)**

Process (*simplified*)



- **Land Use** – Waikato Regional Council (WISE/Alchemists Ltd)
- **Economic** – Market Economics Ltd (WISE/economic model)
- **Population** - University of Waikato (WISE/demographic models)

Detailed Process and Timeline



Your input required

- **Nov 2018** - Current District Plans /Growth Strategy Data
- **March 2019** – Updated WISE Model: validation/calibration
- **Oct 2019** - Land use projections - validation with TAs

Healthy environment

Strong economy

Vibrant communities

What Projections?

- **By TA / by SA2 (small area units)**
 - Land Use (by 25 land use classes, 100mx100m)
 - Population (by gender/age cohorts) / (total)
 - Households (by household type) / (total)
 - Labour force
 - Employment (as Modified Employee Counts, MEC's)
 - Value Added (\$m)

✓ Time steps 2018, 2025, 2035, 2045, 2055, 2065)

✓ Delivered by ~~February 2020~~ (?)

Projections data for 2021 LPT - Data needs for Waikato TA's

March 2017

Councils Needs

Projected Parameters of Interest	WDC	HCC	WaipaDC	MPDC	HDC	TCDC	ODC	SWDC	Waitomo DC	Taupo DC	Rotorua DC
Population by TA	X	X	X	X	X	X	X	X	X	X	X
Population by CAU	X	X	X	X	X	X	X	X	X	X	X
1 Population by Ward				X	X	X					
1 Population by Settlement/Urban area				X	X	X					
Households - types by TA	X	X	X	X	X	X	X	X	X	X	X
Households - numbers by CAU	X	X	X	X	X	X	X	X	X	X	X
2 Households by Wards/Settlement/Urban area											
3 Dwellings - by CAU				X	X	X					
4 Rating Units by CAU				X	X	X					
Labourforce by CAU	X	X	X	X	X	X	X	X	X	X	X
Employment by CAU	X	X	X	X	X	X	X	X	X	X	X
Added Value by CAU	X	X	X	X	X	X	X	X	X	X	X
5 Business floorspace demand / capacity	X	X	X								
5 Residential area demand / capacity	X	X	X								

Projections - Modelled by University of Waikato

Projections - modelled using WISE LU and other models

Issues

Projection timeframe - previously 2013-2061 - will next round be 2018 to 2066?

Projected at '10 yearly' intervals - (2013, 2021, 2031, 2041, 2051, 2061) ? - shorter time intervals will require more modelling and cost, option to linearly interpolate between timesteps

1 A new Population Models would be required to process at Wards and a separate model for Settlements/urban areas - cost similar to running current CAU model

2 Not possible - Wards are not an amalgamation of CAU's. CAU's cut across ward boundaries – so underlying data not available to support robust modelling

3 This analysis would depend on assumptions used to define dwellings. UoW modelling projects households. Households represent the demand and dwellings supply.

The difference between households and dwellings is generally vacant dwellings.

- Census data provides an indication of 'proportion of vacant dwellings'
- If the assumption is used and accepted that the census 'proportion of vacant dwellings' is constant into future the 'dwellings' could be projected from household numbers.

4 This analysis would depend on assumptions used to define a rating unit. There is a definition in Rating Valuations Act 1998 s 5B & 5C Rating Valuations Act 1998 No 69.

So it is assumed TA's are able to define current number of rating units by category in their district.

Projecting Rating units would require some assumptions to be made and agreed by TA's

- If assume that residential dwellings are a good indication of residential rating units could use dwelling data projected above.
- If assume ratio of commercial/industrial rating units to residential dwellings stays constant then could project this ratio forward based on projected dwellings.
- Would assume no change in rateable units outside residential and commercial/industrial - I.e Rural
- Could check / explore alternate methods further

5 These paramters are currently being modelled for FP by Market Economics - based on existing projections outputs (land use, households etc)

Confirmed funding

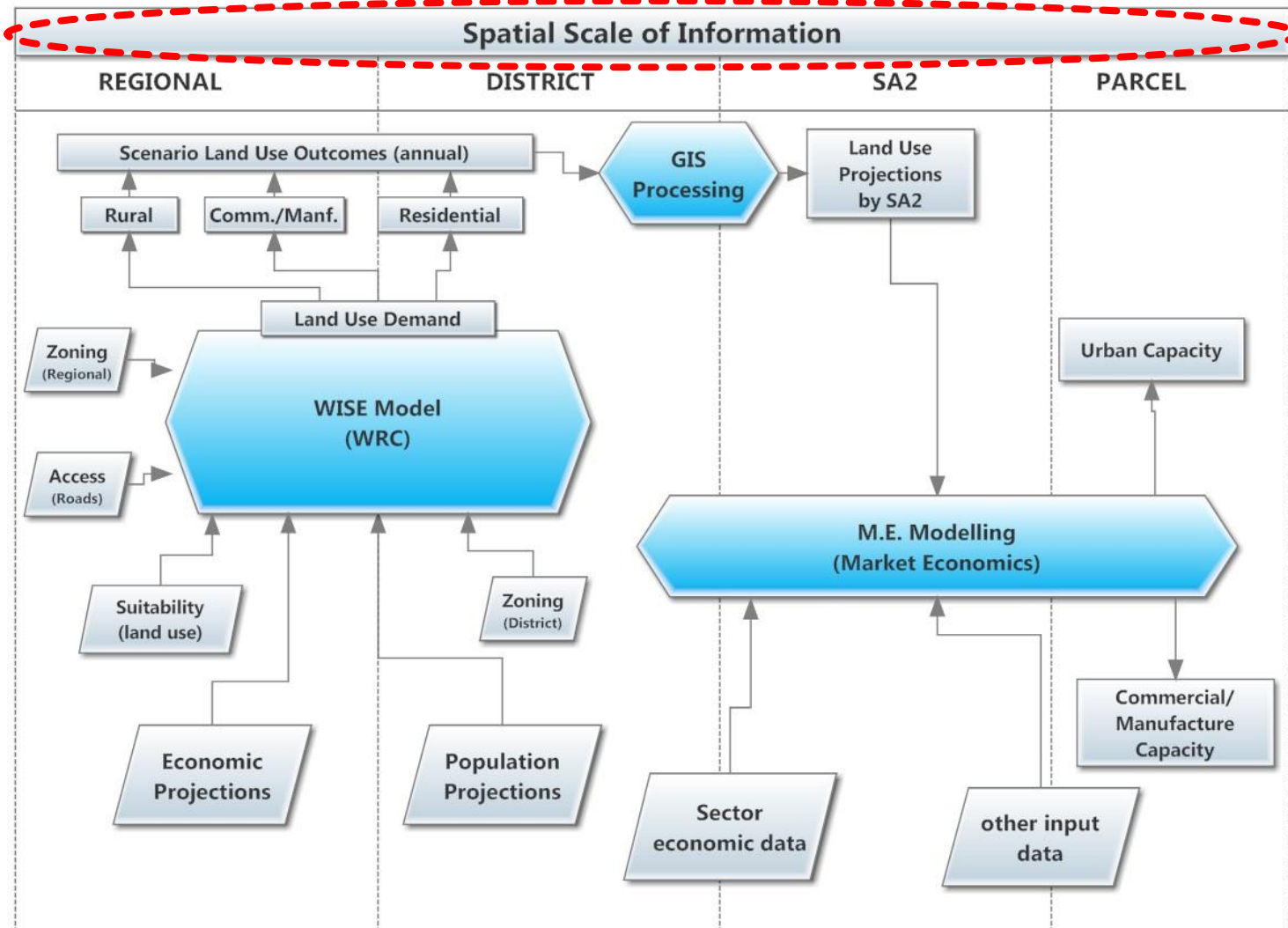
1. WISE update to version 1.5
(data, zoning, model update and calibration etc.)
2. Land use and economic projections
(and web-based access to all results, data visualisation)
3. **Population projections** (refer to UoW proposal) - **108k***
 - WRC – 30k ✓
 - Future Proof – 30k ✓
 - WLASS (TAs) /WRTM – 48k ✓

WRC ✓
(100k +)

*Note

- Medium projections only (add 12k for low/high projections at TA and SA2 level)
- Basic reporting only (add extra \$ for detailed/tailor-made reporting)

Links to other work



Healthy environment

Strong economy

Vibrant communities

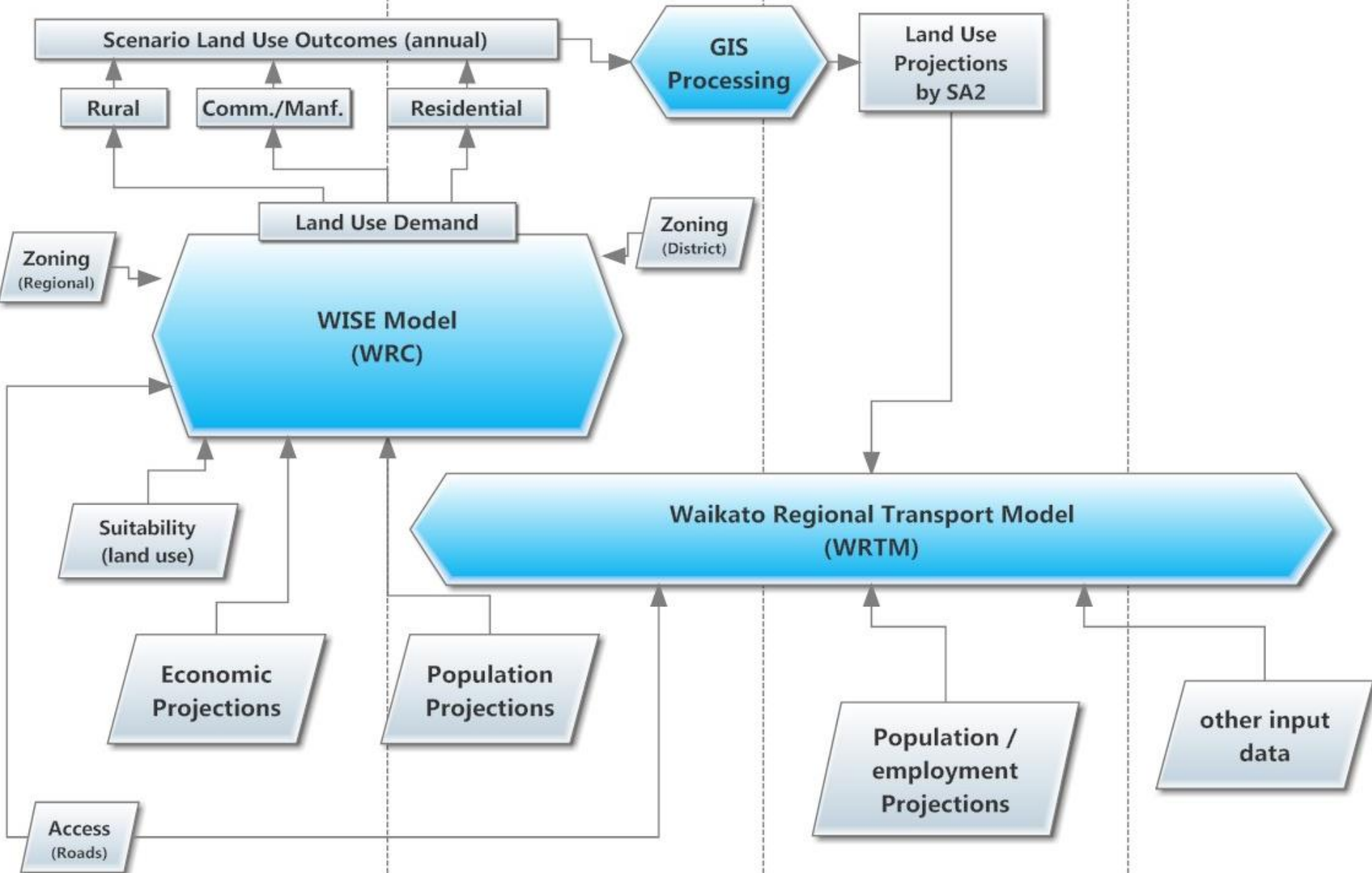
Spatial Scale of Information

REGIONAL

DISTRICT

SA2

PARCEL



Next Steps

1. Develop detailed work briefs and contracts –
August 2018
2. Liaise with TAs, WLASS/WRTM for required input
ongoing
3. Keep you informed
(through Waikato Projections Working Group)
4. Explore web-based data access & presentation
– with M.E.

[Home](#)[WISE](#)[Reference Scenario](#)[Waikato Projections](#)[Projections Working Group](#)[Projections Outputs](#)[Exploring Scenarios](#)[Case Studies](#)[Resources](#)[What's New](#)

Projections Working Group

The Waikato Projections - Working group

The Waikato Projections Working Group consists of staff representatives from all the District councils and Waikato Regional Council. It also includes representation from District Health Board and Waikato's Regional Transport Model.

The purpose of the Working Group is to plan and implement a process to provide a regionally consistent set of **future population and economic projections** for the Waikato based on the upcoming 2018 census so that they met the needs of individual councils for their work in preparing thier next LTP (2021) and other planning/strategies (Urban Growth - NPS).

Workshop Reports

The following is a record of the minutes and materials presented at the Waikato Projection working group workshops.

26th March 2018

 [Waikato Projection Working Group - Notes Meeting 26 March 2018](#)

 [Waikato Projection Working Group - Slides meeting 26 March 2018](#)

 [Waikato Projection Working Group - Proposal for Populatiopn & Household projections \(University of Waikato, Michael Cameron, March 2018\)](#)

Home

WISE

Reference Scenario

Waikato Projections

Projections Working Group

Projections Outputs

Exploring Scenarios

Case Studies

Resources

What's New

Projections Outputs

Projection Reports:

 [Land Use Projections at CAU Level \(Alchemists Ltd\) \(8 Mb\)](#)

 [Population, Household, Labourforce Projections at CAU Level \(University of Waikato\) \(1 Mb\)](#)

 [Economic \(Employment, Value Added\) Projections at TA Level \(Market Economics Ltd\) \(5 Mb\)](#)

 [TA Level - Population, Household, Labourforce Projections \(2013-2063\) \(University of Waikato\) \(5 Mb\)](#)

Access Data or View Results

To view or download the Census Area Unit level data from Projections project (WORK IN PROGRESS) [>> Click Here](#)

Waikato Projections - Results by Census Area Unit



Choose Projection:

Low Growth

Medium Growth

Choose a dataset to download:

Low Growth - Area Unit Data

dataset

About Population Households Labourforce Employment Value Add

Welcome to the interactive data portal for the Waikato Projections. This portal allows you to access, sort and export the results of the projections undertaken in 2016. You can access the different projections data by choosing the appropriate tab above. Scroll down to see maps of the census area units across the Region.



Data files:

- Land Use projections (CAU,TA) - [Low Projection](#), [Medium Projection](#)
- [Economic projections - Employment, value added\(CAU, TA\)](#)
- [Population projections - Population \(TA\)](#)
- [Population projections - Households, labourforce \(TA\)](#)
- [Population projections - Population, households, labourforce \(CAU\)](#)

Healthy environment

Strong economy

Vibrant communities