

# Waikato Projections



Geographx

## Agenda

1. Overview
2. Future Proof & regional projections
3. Your requirements
4. Next steps → Working Group

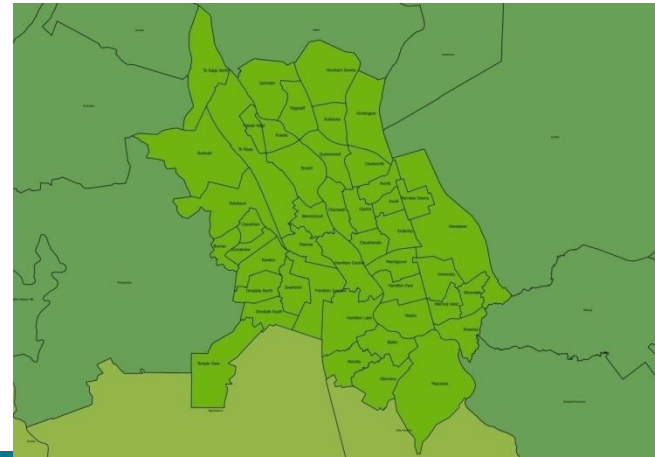
# Use of Projections

- LTPs, RPS, Regional/District Plans
- Transport planning (RLTP, RPTP, NZTA funding)
- Infrastructure and Asset Management Plans
- Non-statutory strategic planning (Waikato Plan, Future Proof, Sea Change, Econ Development)

at the (inter)-regional, district/city, local level

## Other drivers

- Better Local Government
- Business Growth Agenda



# Population Projections for the Waikato Region

NZ Population Clock

**4,730,776**

as at Wednesday, 10 Nov 2016  
at 09:04:21

- NIDEA, University of Waikato
  - ✓ Population (by age/gender)
  - ✓ Households
  - ✓ Labour force
- From 2013 to 2063
- By TA and CAU



Projections are not predictions.  
All projections are wrong...

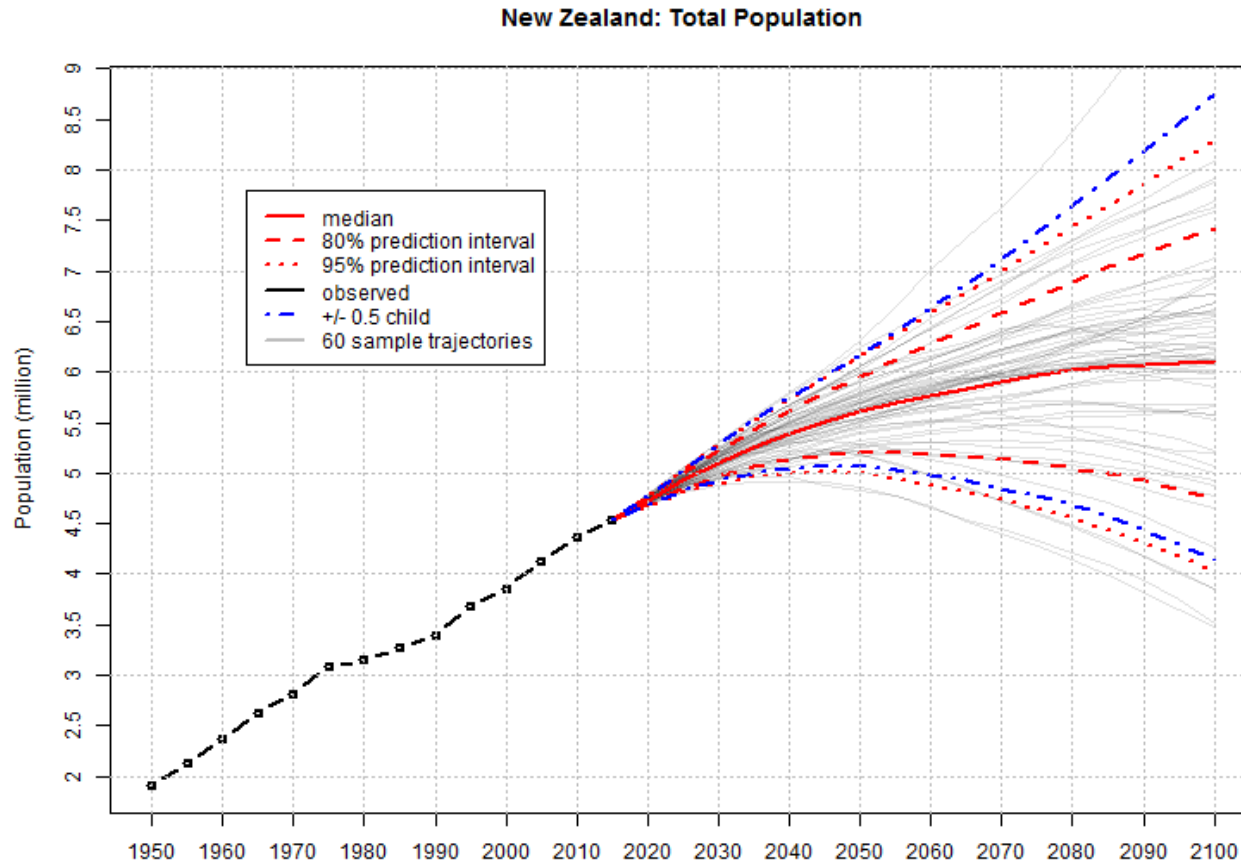
Healthy environment

Strong economy

Vibrant communities

# UN Population Projections for NZ

Un Department of Social and Economic Affairs, 2015, <http://esa.un.org/unpd/wpp/Graphs/>

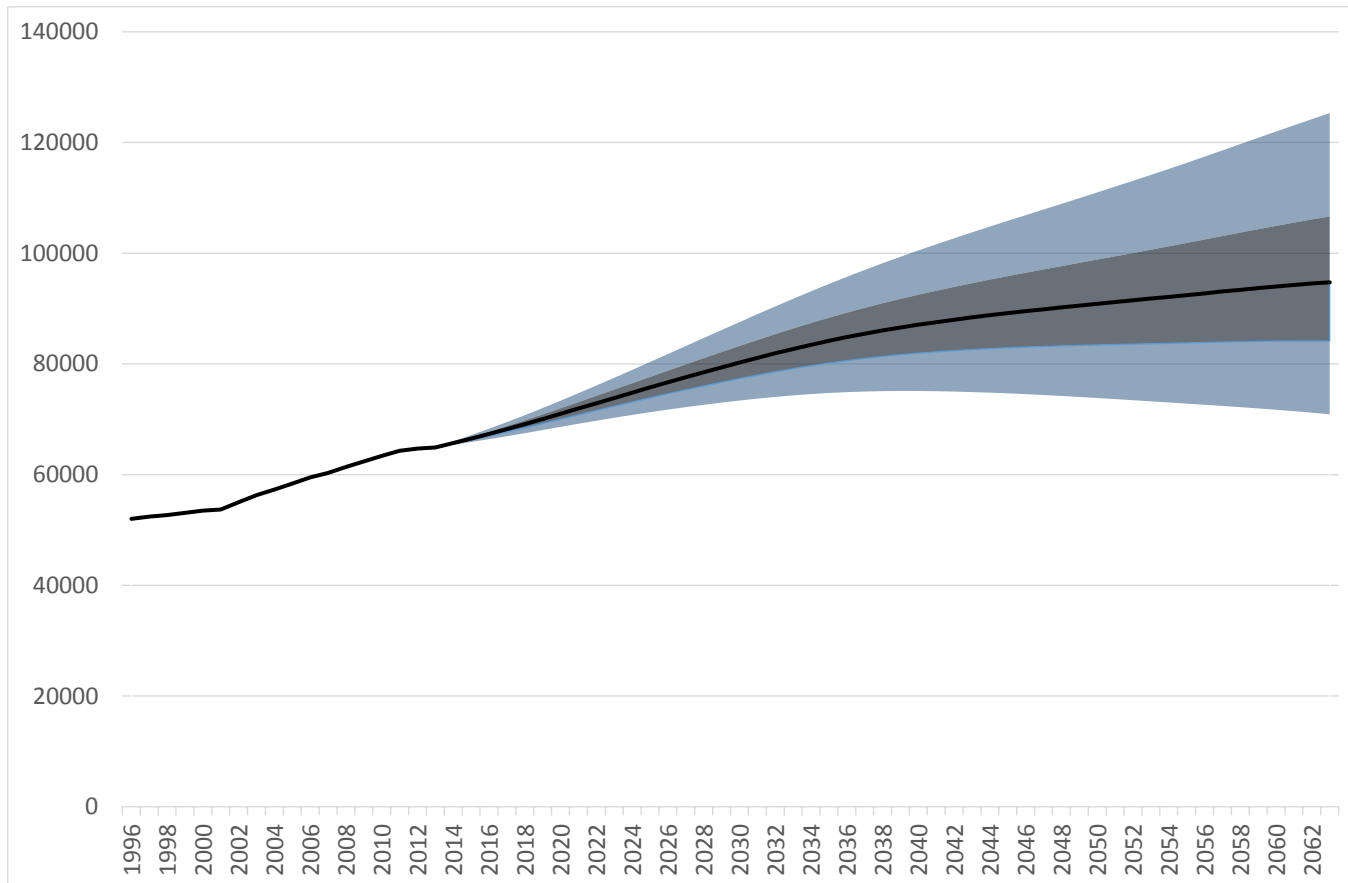


Healthy environment

Strong economy

Vibrant communities

# Probabilistic population projections for Waikato District

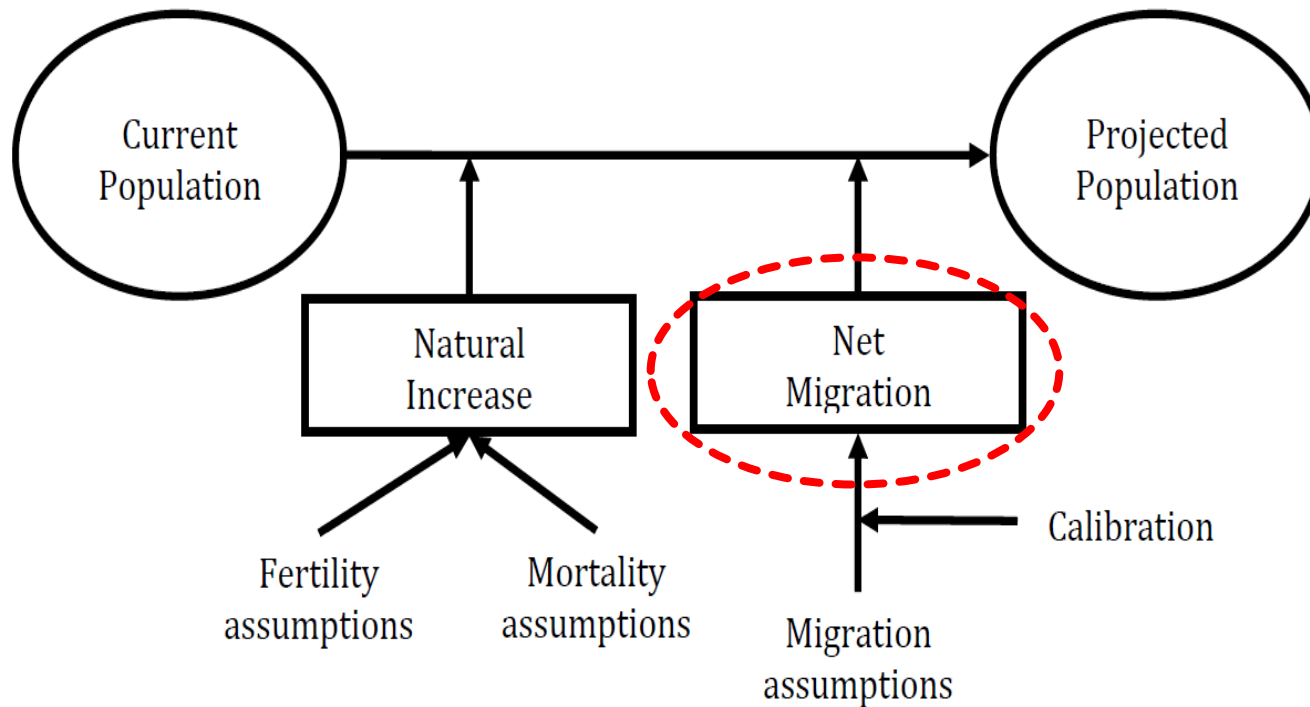


Healthy environment

Strong economy

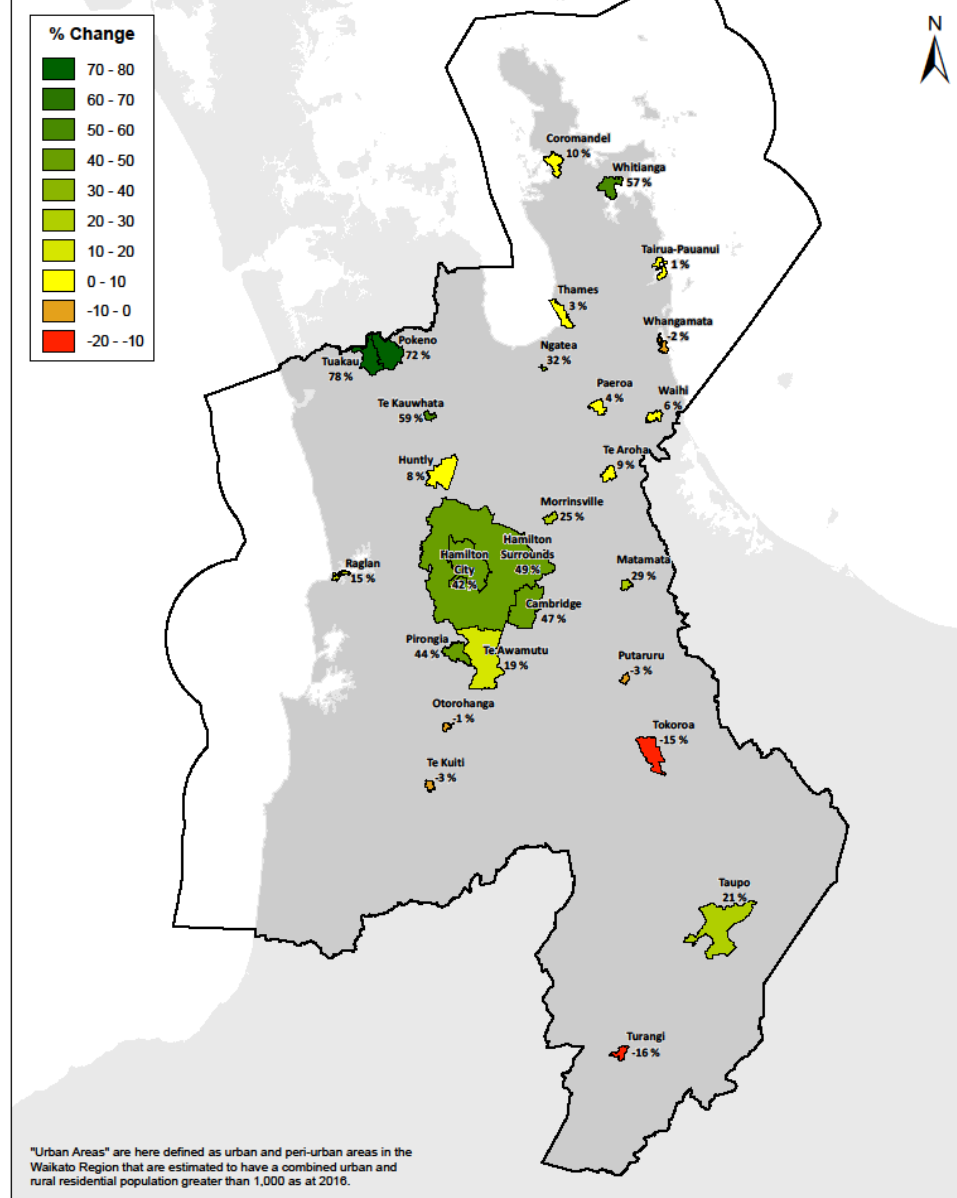
Vibrant communities

# Waikato Population Model (NIDEA)



# Population (estimated resident pop)

## Urban Areas Change 1996-2016 (%)

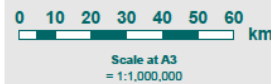


Acknowledgements and Disclaimers  
Digital Boundary Data sourced from Statistics New Zealand.

Urban Areas data derived by Waikato Regional Council from Statistics New Zealand Urban Area, Census Area Unit and Meshblock data, 2016.

CC-BY Land Information New Zealand. This product uses data sourced from Landcare Research under CC-BY, <http://creativecommons.org/licenses/by/3.0/nz/>.

**Urban Areas Estimated Resident Population % Change 1996-2016**



Created by: DGLP  
Date: 8/11/2016  
Version: FINAL  
Job No.: 32049  
File: 3209\_Percent\_Change\_A3\_Map.mxd

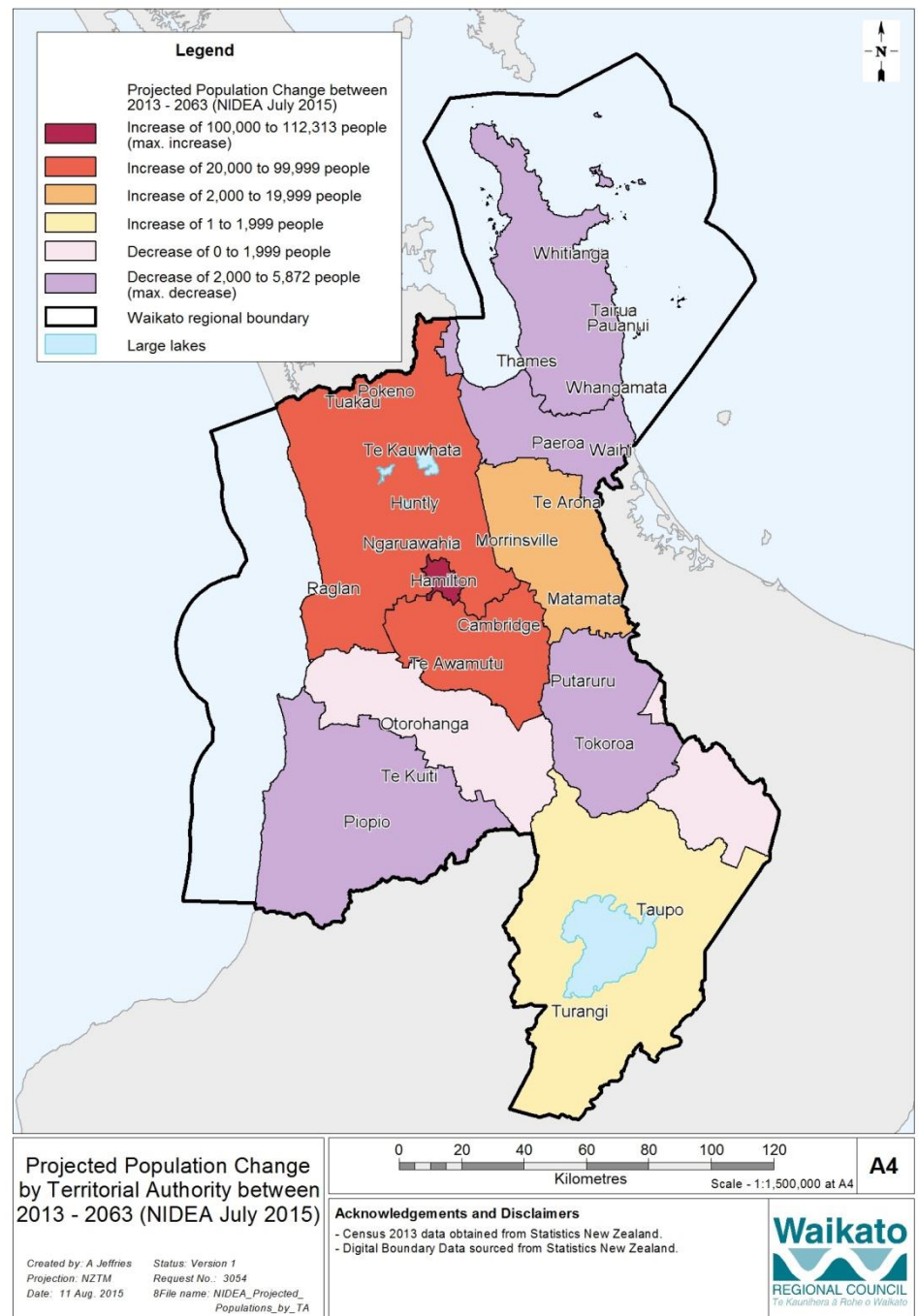
**Waikato**  
REGIONAL COUNCIL  
Te Kaitiaki Take Kōwhiri

DISCLAIMER: While Waikato Regional Council has exercised all reasonable skill and care in controlling the contents of this information, Waikato Regional Council accepts no liability in contract, tort or otherwise howsoever, for any loss, damage, injury expense (whether direct, indirect or consequential) arising out of the provision of this information or its use by you.

Healthy environment  
Strong economy  
Vibrant communities

# Projected population changes in the districts, by 2063

Continuing regional growth, but significant variations across the region



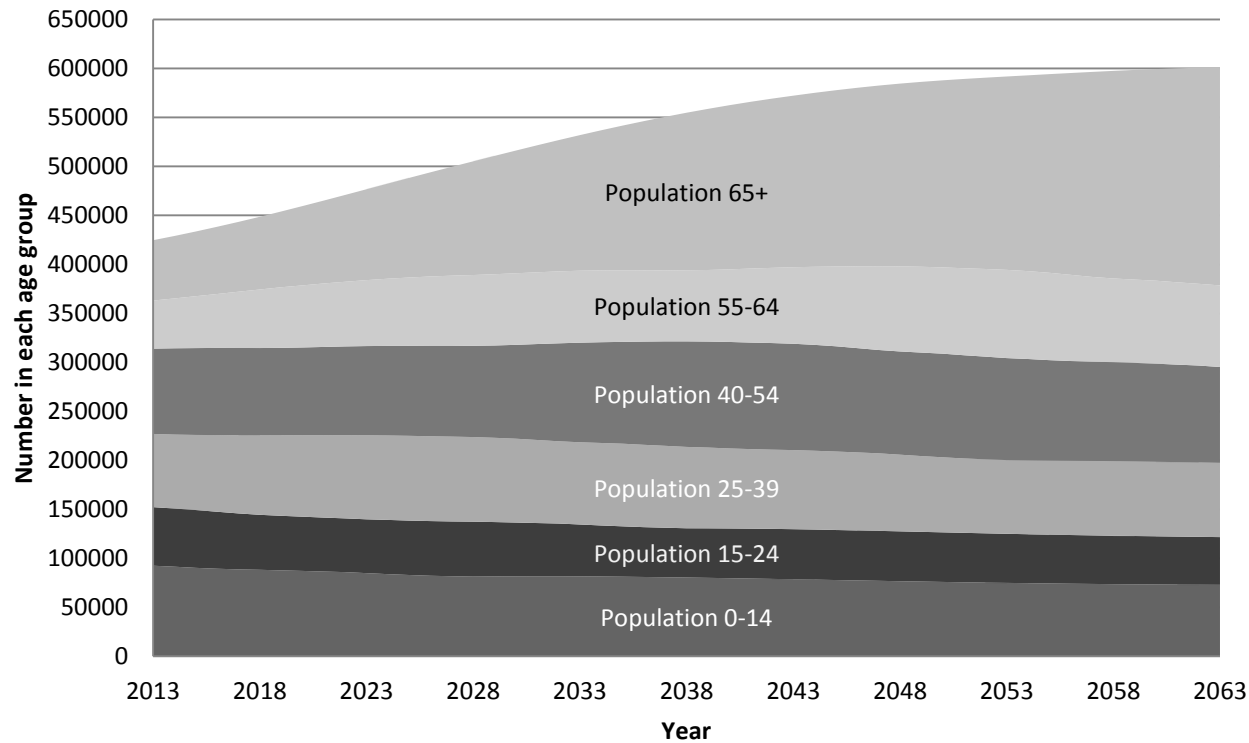
Healthy environment

Strong economy

Vibrant communities



# Key issues – ageing and depopulation



**Waikato population projections 2013 to 2063, by age group**

# Projections 2013-2063

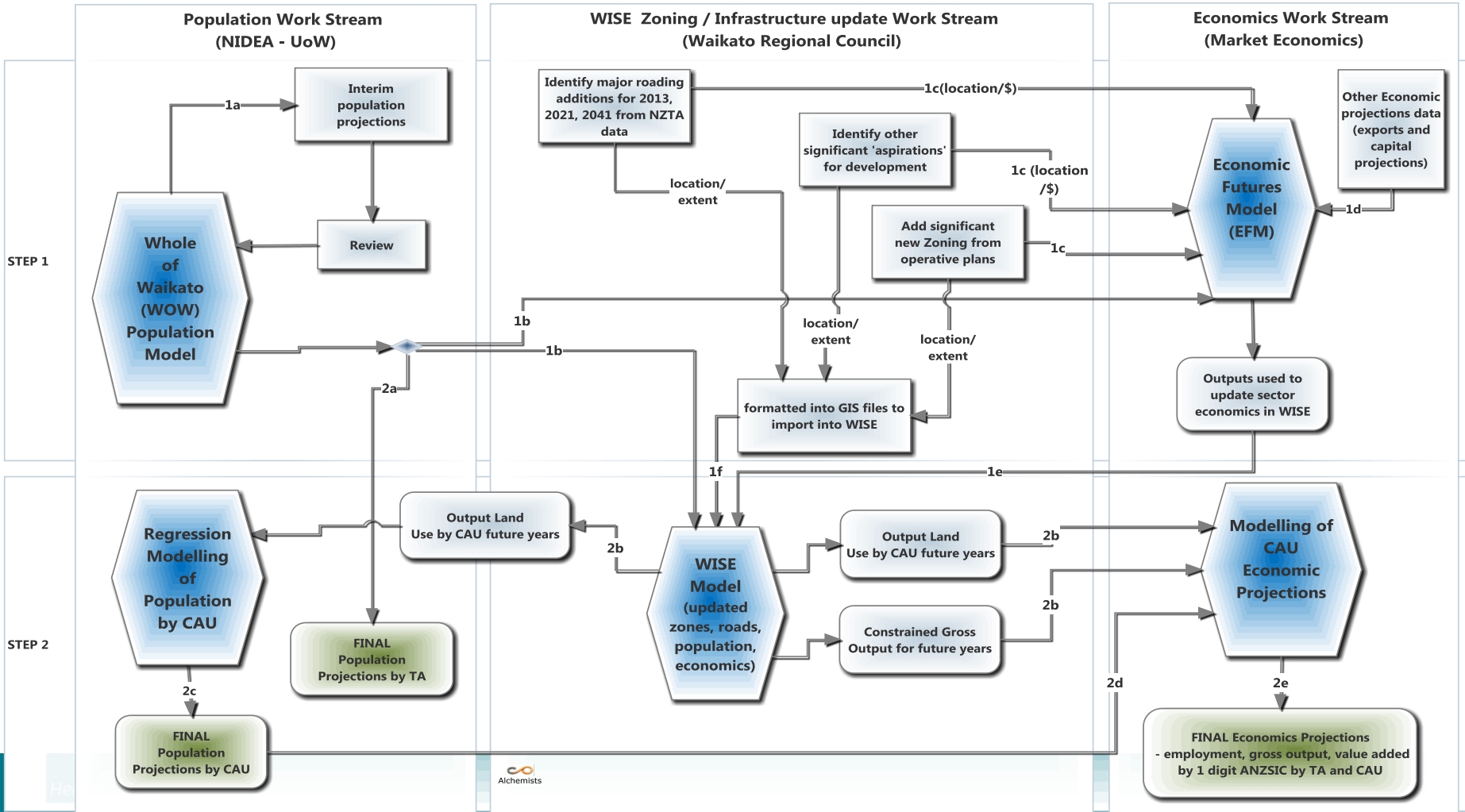
- Projections of: **Land Use, Population, Economics**
- Waikato region, TAs (11) and CAUs (201)
- **Land Use** – Waikato Regional Council (WISE/Alchemists Ltd)
  - ✓ Land use (25 urban and rural land use classes; 100mx100m)
- **Population - NIDEA, University of Waikato**
  - ✓ Population (by age/gender)
  - ✓ Households
  - ✓ Labour force
- **Economic** – Market Economics Ltd
  - ✓ Employment
  - ✓ Value-added

Simplified process links:



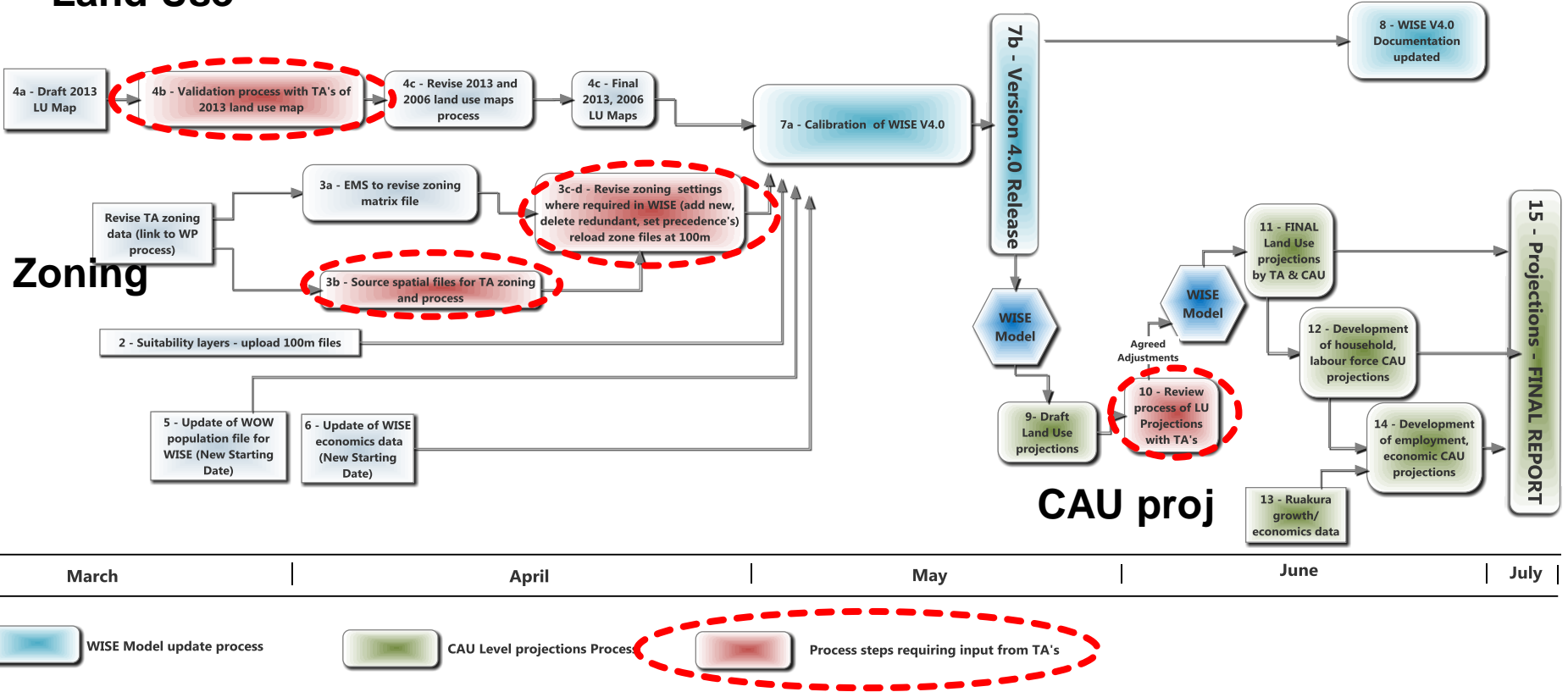
# Process for developing land use, population and economic projections for the Waikato Region

Work stream process for creating updated population and economic data for WISE, WRTM, and FP



# 2015 Update of WISE – Input from TAs

## Land Use



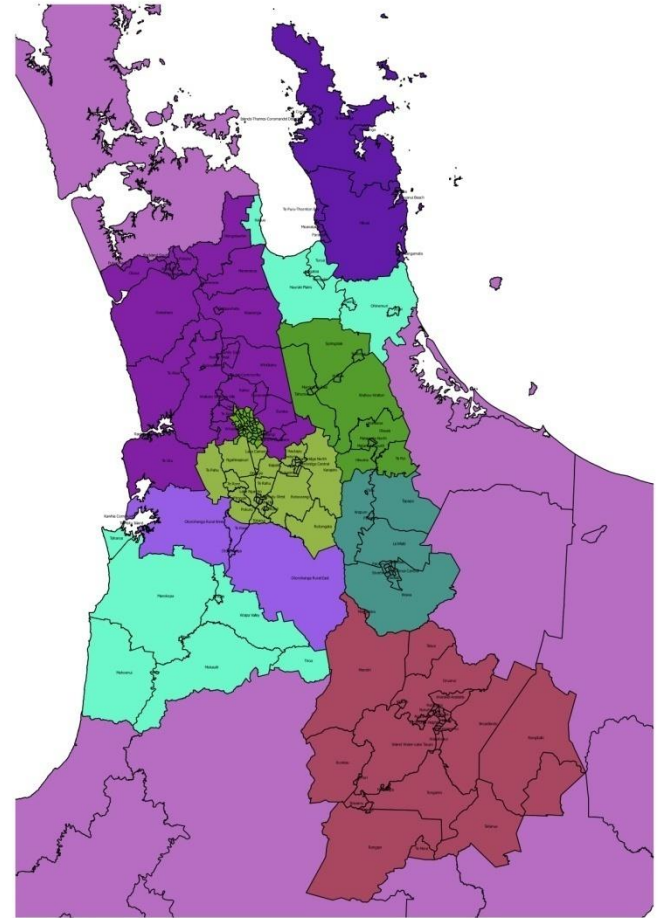
Healthy environment

Strong economy

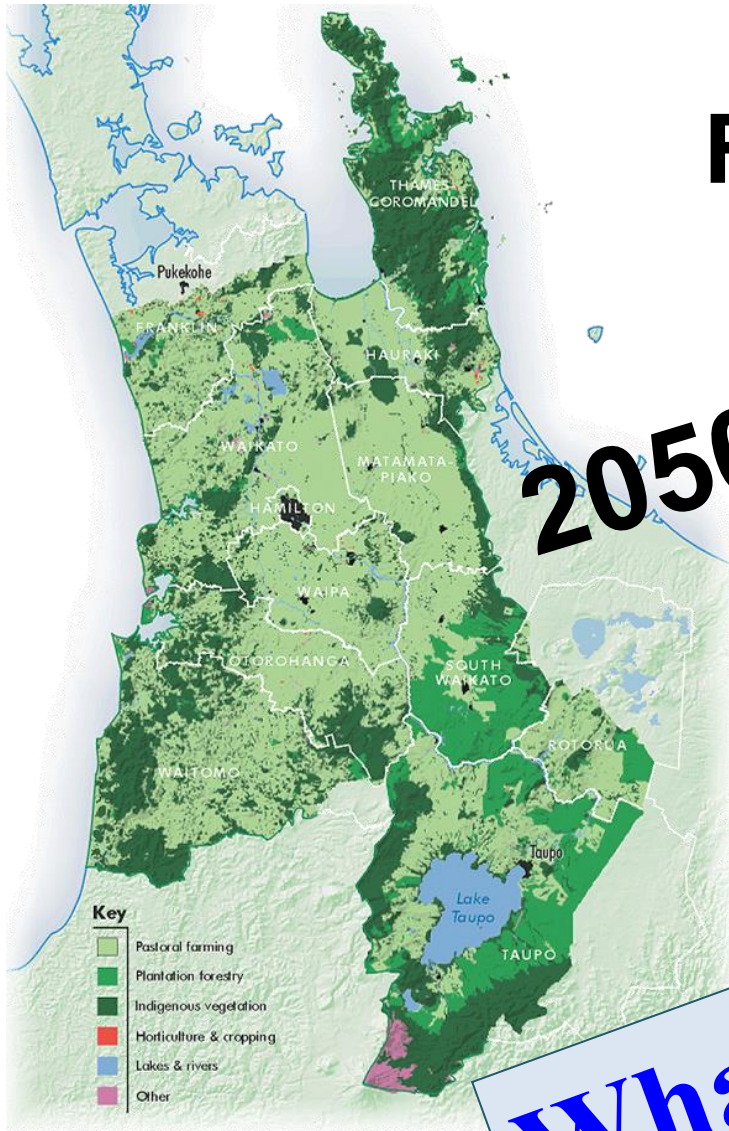
Vibrant communities

# Projections – Some Caveats

- Not forecasts or predictions
- Models are not reality
- Uncertainty
- Models cannot mind read
- Limited knowledge – ongoing improvement



# Future Scenarios



What, if...?



Healthy environment

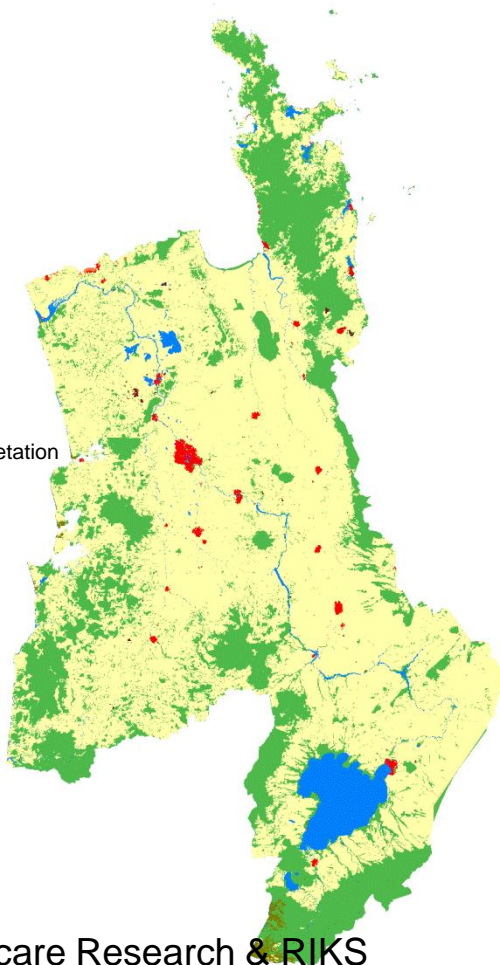
Strong economy

Vibrant communities

# Waikato in 2050 – Three Different Futures (*what/ifs?*) (based on WISE Prototype)

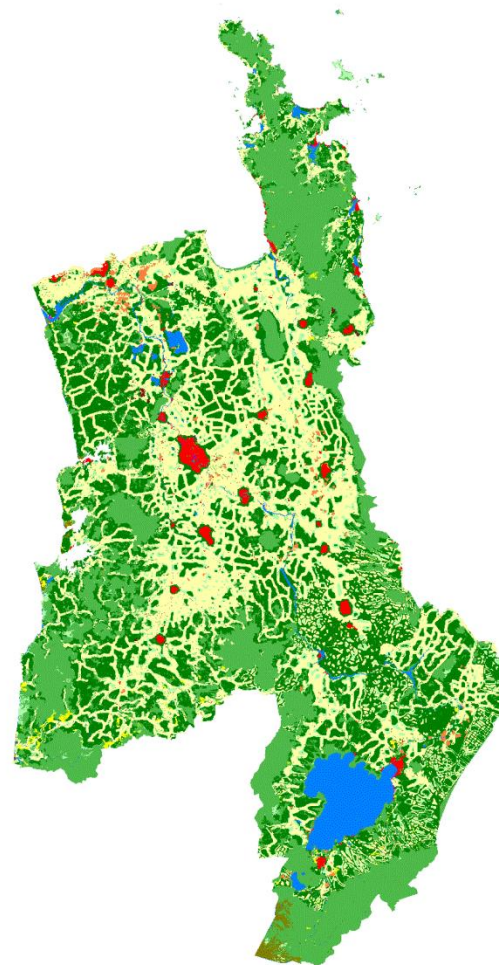
## 1-Dairy Expansion

Land for dairying  
increases ~4% annually



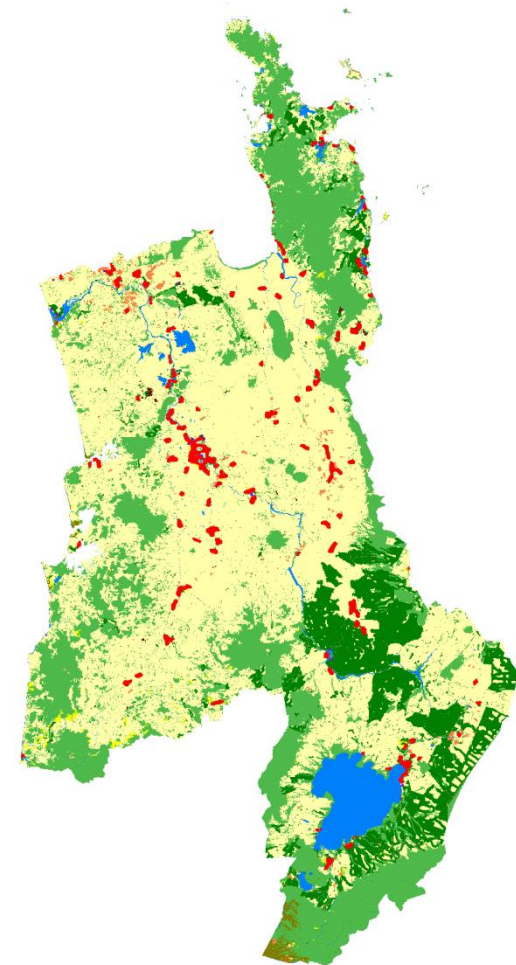
## 2-Diversification

Demand for non-dairy primary  
production land increases

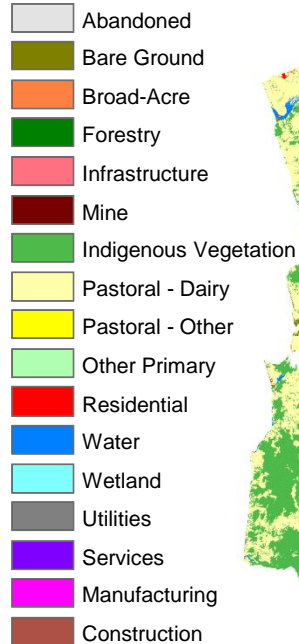


## 3-Village Life

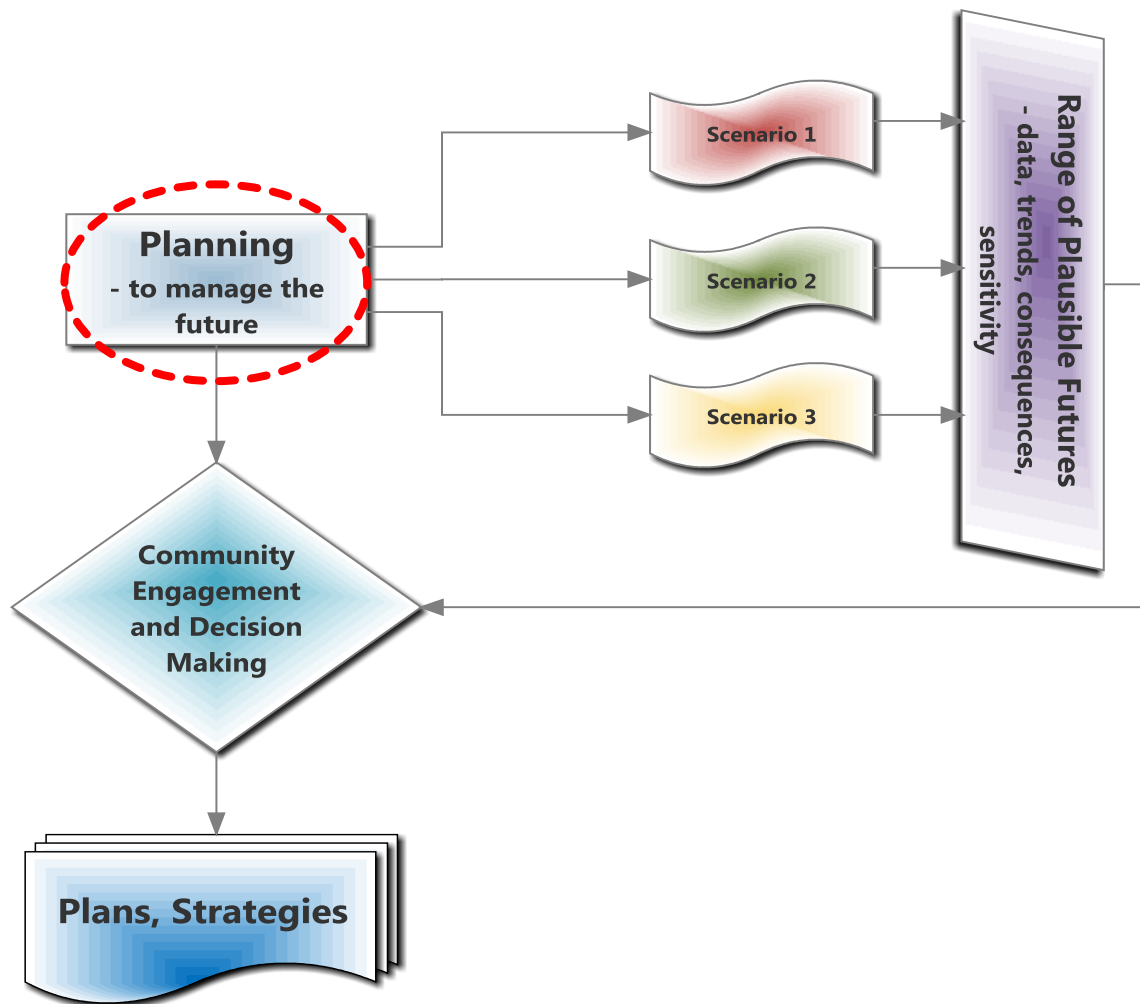
Residential land  
increases 7-fold



### Land Use



# Use of projections/WISE Model for Scenarios



Healthy environment

Strong economy

Vibrant communities



# Thank you

## Data files and documents available from:

- <ftp://Projections:CRiZSjCR@pubftp.waikatoregion.govt.nz>
- (follow instructions in email of meeting invite, access expires 9 Dec 2016)

## Data:

- 1) TA and CAU Land Use projections
- 2) TA population projections (pop, households, labour force) – *CAU by Nov 2016*
- 3) *TA and CAU Economic projections (value added, employment) – End Dec 2016*

## Reports:

- 1) Population, family and household, and labour force projections for the Waikato region, 2013-2063 (2015 update): <http://www.waikatoregion.govt.nz/TR201528/>
- 2) Land Use, Demographic and Economic Projections for the Waikato Region, 2013 to 2061' (methodology, process and March 2016 data): [www.waikatoregion.govt.nz/tr201603/](http://www.waikatoregion.govt.nz/tr201603/)

## WISE Model:

- 1) YouTube video: <https://www.youtube.com/watch?v=RgEABCz1Rrl>
- 2) Website: <http://www.creatingfutures.org.nz/>