

Creating Futures: Tools for Integrated Planning

Beat Huser &
Garry McDonald

Wellington

Auckland

Hamilton
- Waikato

Presentation to EPA Victoria, Melbourne, 7 December 2010

What we will cover today:

- **New Zealand's Governance structure**
- **Creating Futures project**
 - Regional Scenarios
 - *WISE (Waikato Integrated Scenario Explorer)* – Spatial Model
- **Case studies**
- **Lessons learnt & future directions**

Waikato Region



Other regions

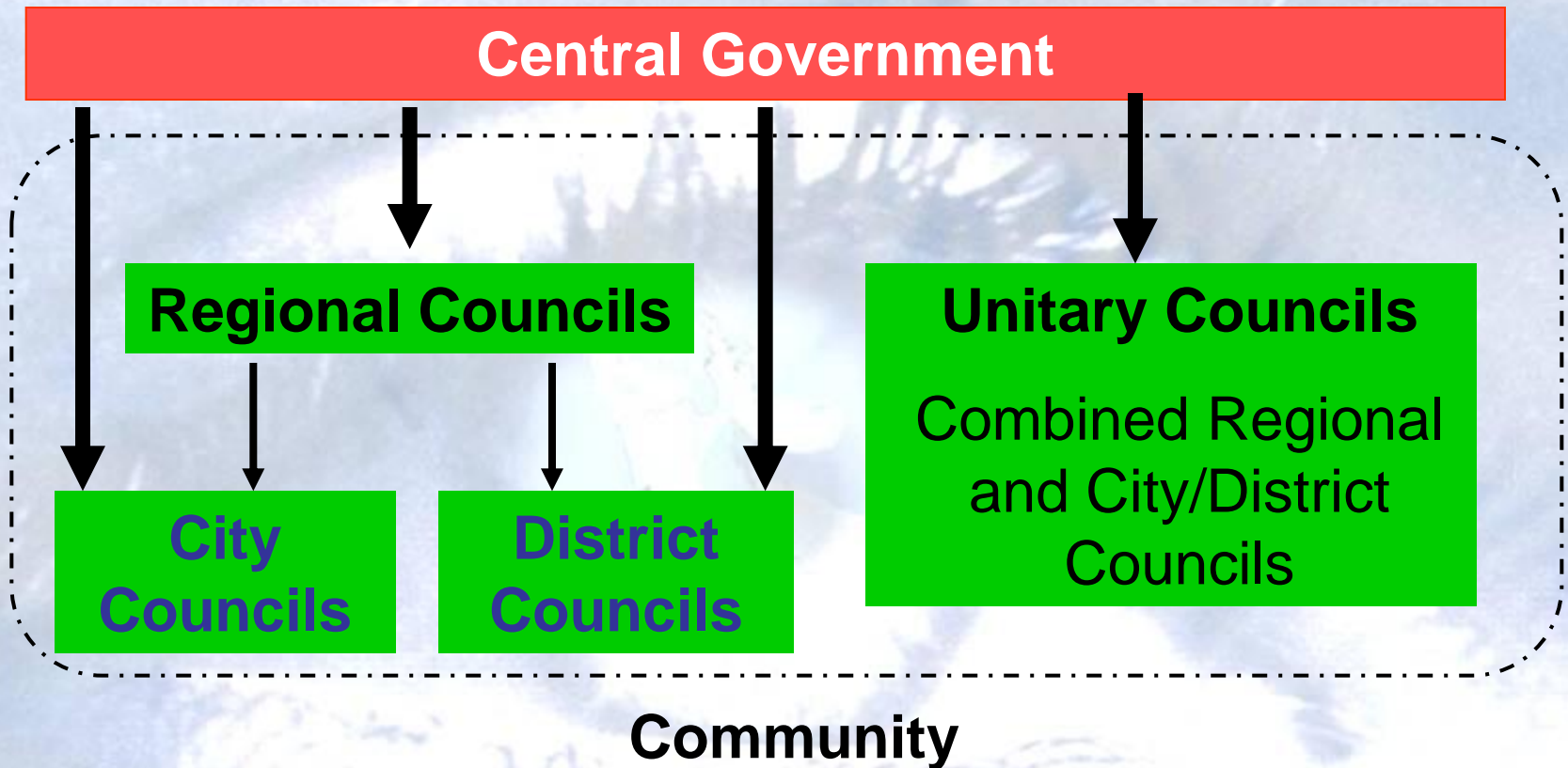
New Zealand

Victoria

Australia

Creating
Futures

The Structure of Government



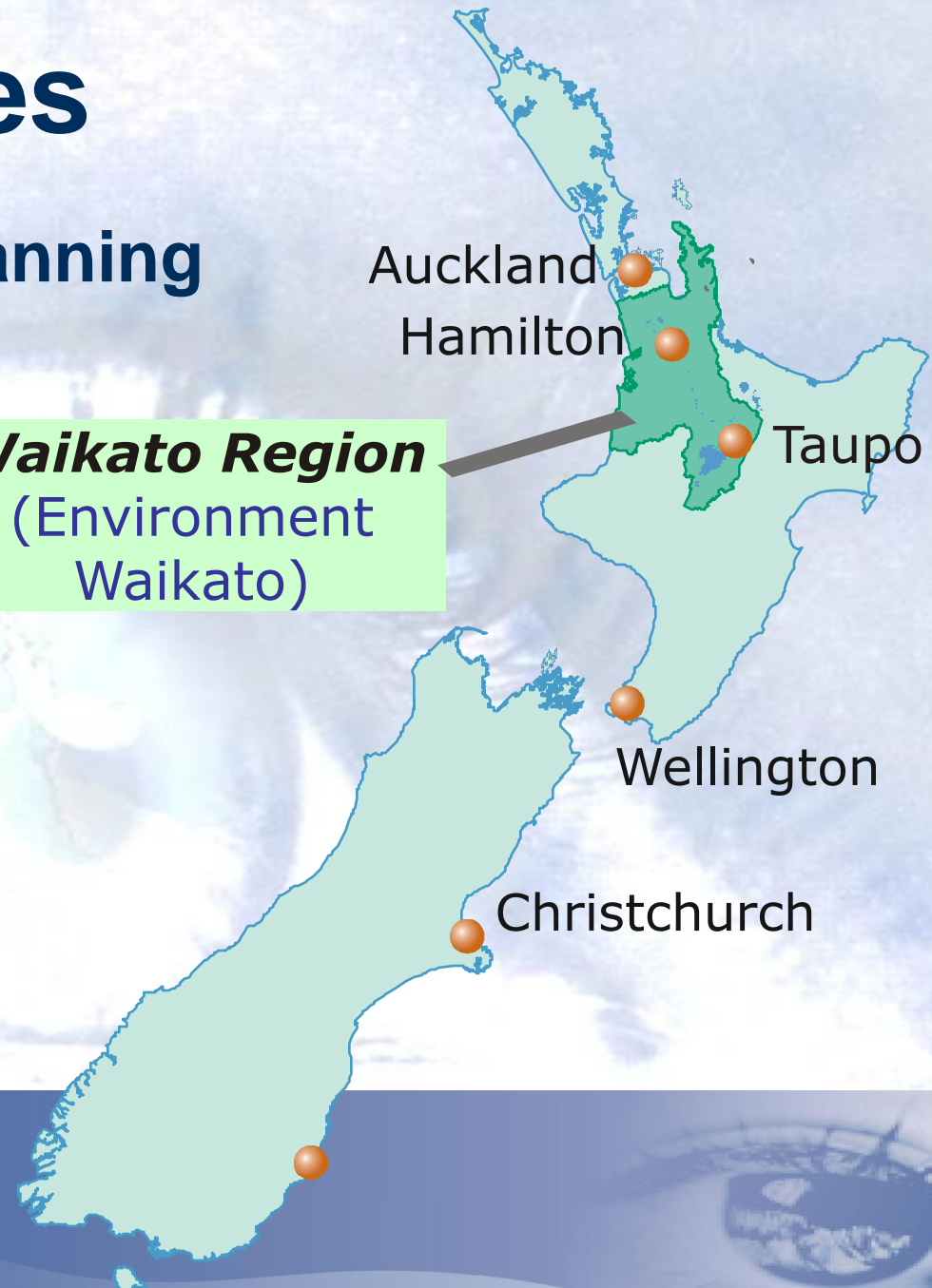
Creating Futures

Tools for Integrated Planning

Waikato Region
(Environment
Waikato)

Auckland
Hamilton
Taupo
Wellington
Christchurch

Creating
Futures



Waikato Region - what we manage

- 25,000 km² total area
- 1,150 km coastline
- Longest river, largest lake
- 400,000 people (10% of NZ)
- \$10 Billion GDP (10% of NZ)
- \$ 6 Billion Agriculture Export



Why 'New' Planning Tools?

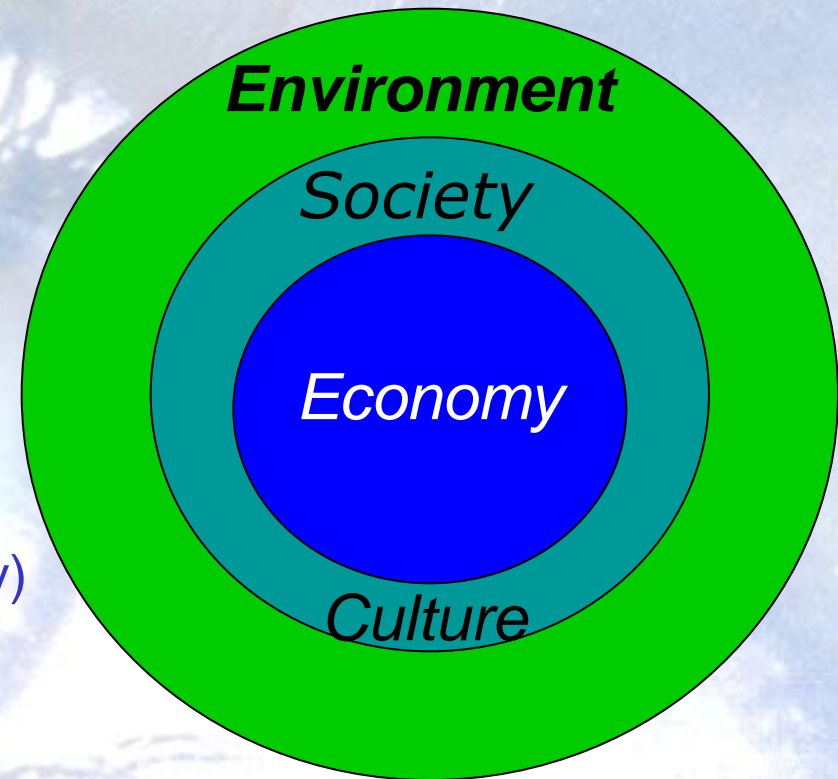
LINKING science and policy

- Informed decision-making
- Evidence-based policies

LONG TERM planning and enhanced strategic focus

INTEGRATION

- Strategic partnerships (multi-disciplinary)
- Linking the four well-beings





Cultural

Social

Economic

Environmental

WELL-BEINGS

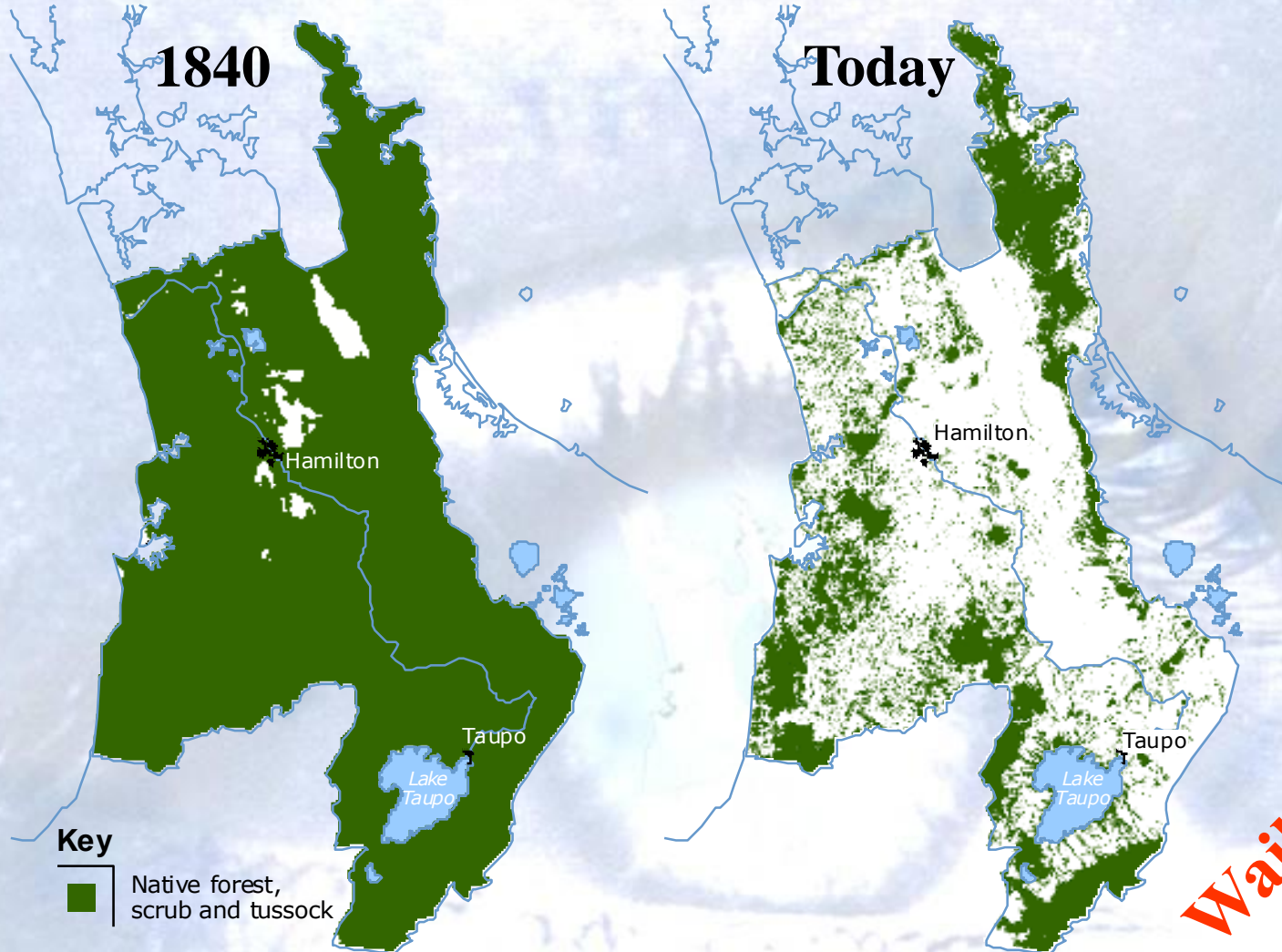
C

tal

Social

Economic

Land Use / Cover



Waikato in 2050?

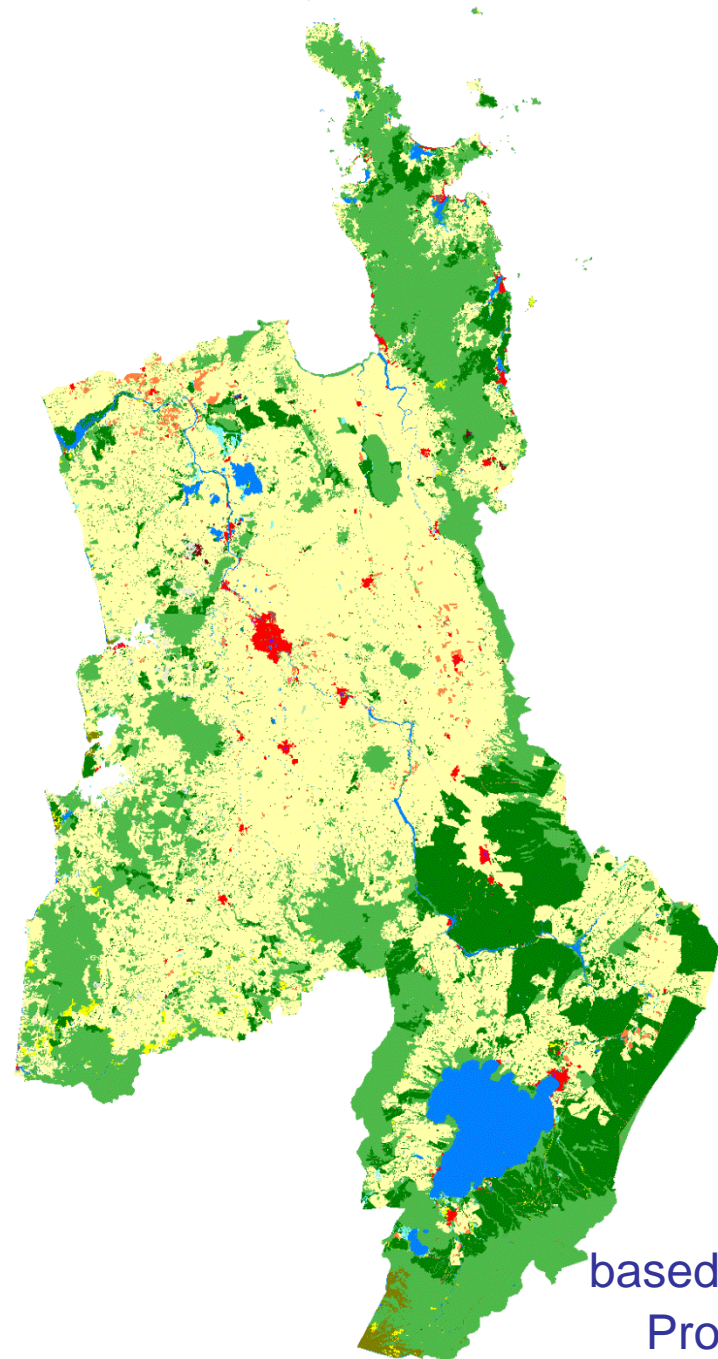
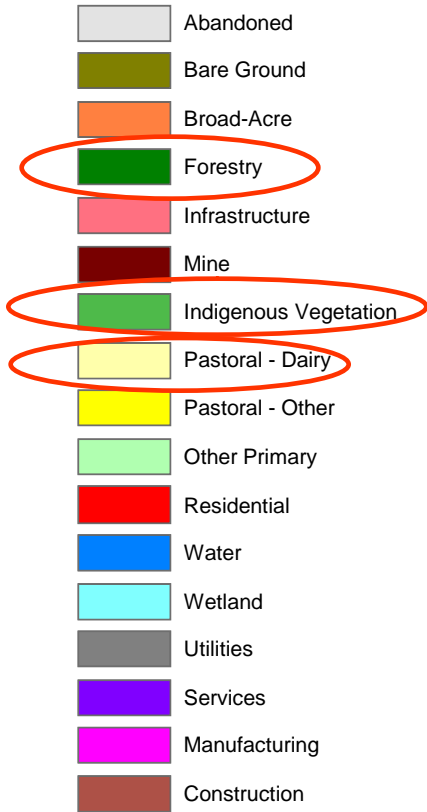
Creating
Futures

Waikato in 2050

what/if ?

Land for dairy farming increases ~4% annually

Land Use



based on WISE
Prototype

Project Aim

Develop and apply
planning and communication tools
to make informed choices for the future

Tools

Scenarios

Deliberation
Process

Spatial Model
(WISE)

Objective 1 - Qualitative Tools

- Scenario planning
- Deliberation processes

*We can't predict
the future*

The 'futures landscape'
is one of shifting sands

Creating
Futures



Horizon Scanning and Scenario planning

A grayscale photograph of a woman in a business suit climbing a ladder. She is leaning forward and looking through binoculars. The background is a cloudy sky. The text is overlaid on the image.

... spotting change early
... thinking strategically

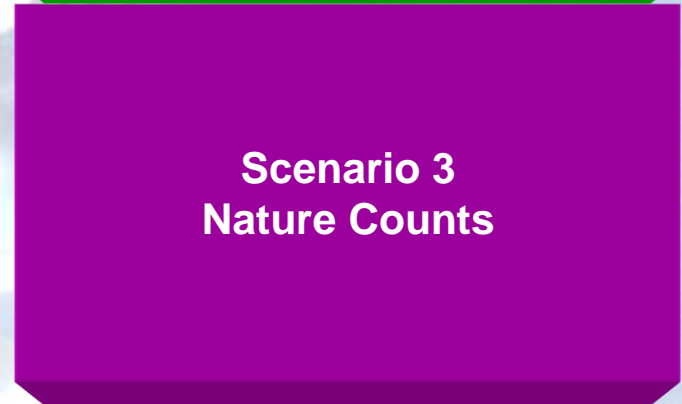
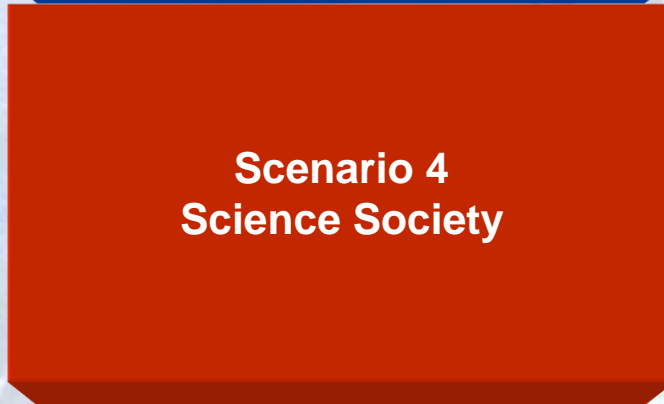
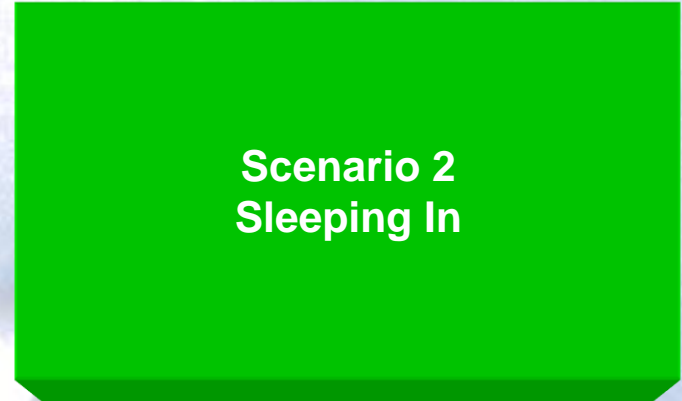
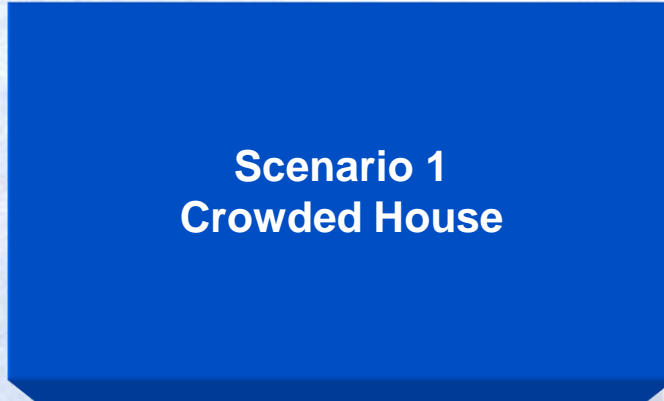
- **Stories of what the future might look like**
- **Built by assessing how trends and drivers might influence the present to create the future.**

Waikato Scenarios

profit
(GDP)



how we
measure
wealth

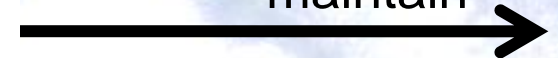


People
(GPI)

mine

natural capital

maintain



Creating
Futures

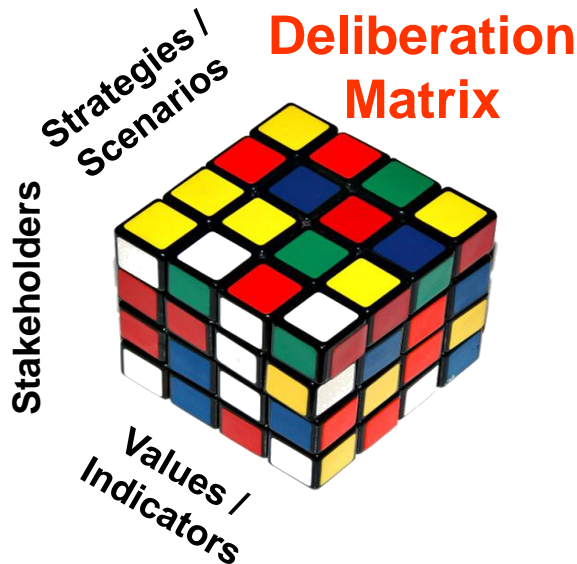
www.creatingfutures.org.nz

The Waikato Scenarios

- **Crowded House**
 - Massive international movement of people and changes in agriculture and energy production
- **Sleeping In**
 - Keep on talking about climate change until it really hits home
- **Nature Counts**
 - A bio-economy where we value land much differently using resource productivity as a key economic indicator
- **Science Society**
 - A society where science takes off and supports a knowledge-based and technology-driven society

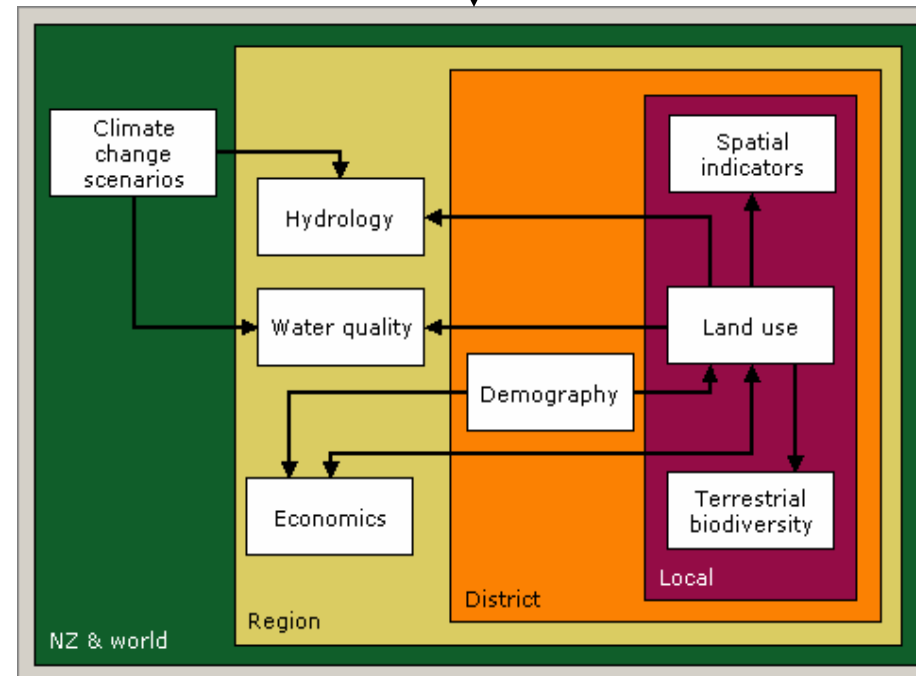
Linking Qualitative and Quantitative Tools

Waikato Scenarios



*Inform design of WISE and
develop and evaluate policies*

WISE



Inform issues and debate

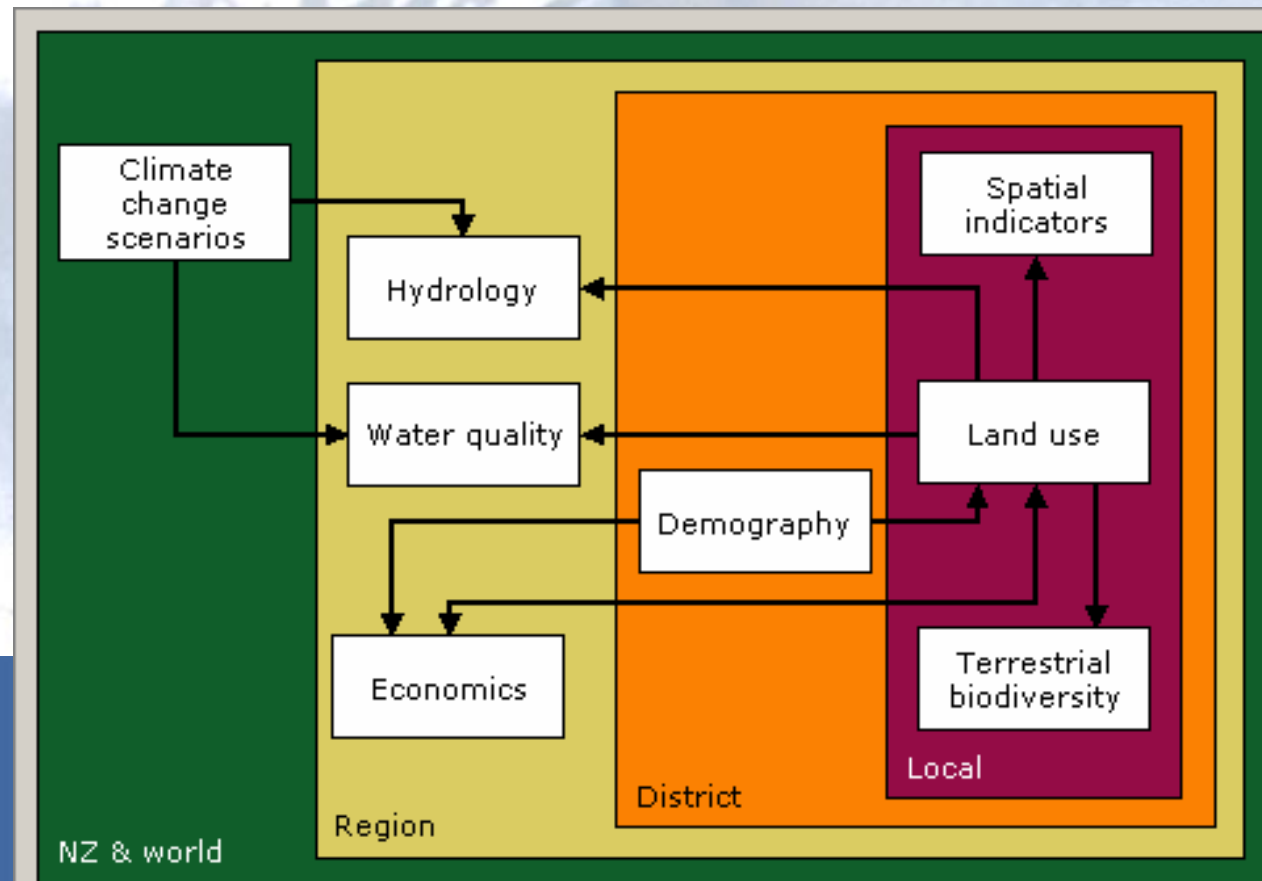
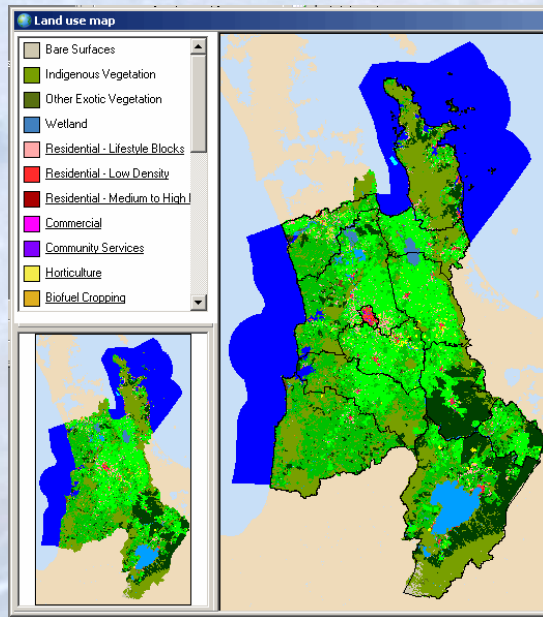
Objective 2

Development of an

- **Integrated, dynamic and spatial Decision Support System (WISE) to support long-term planning.**

What is WISE?

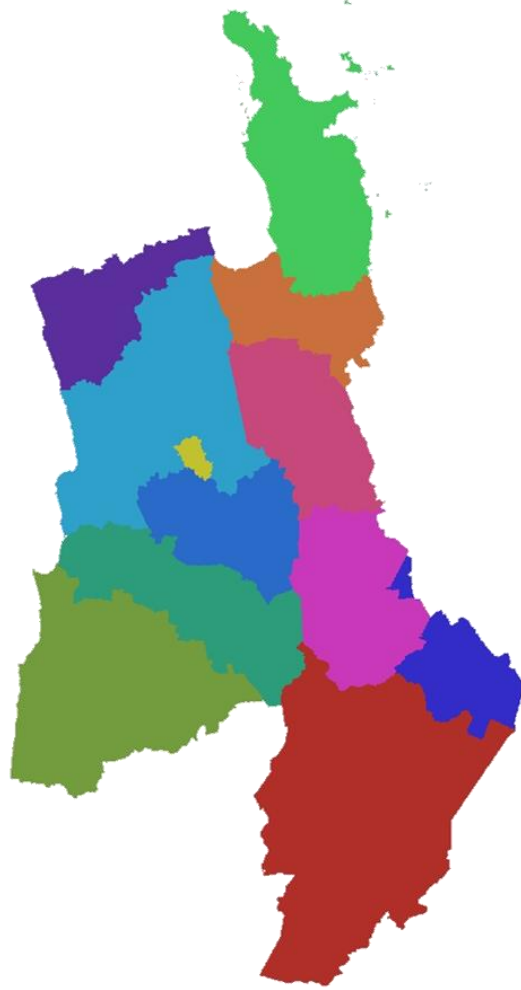
- WISE = Waikato Integrated Scenario Explorer
- Stand-alone software application
- System of interacting models



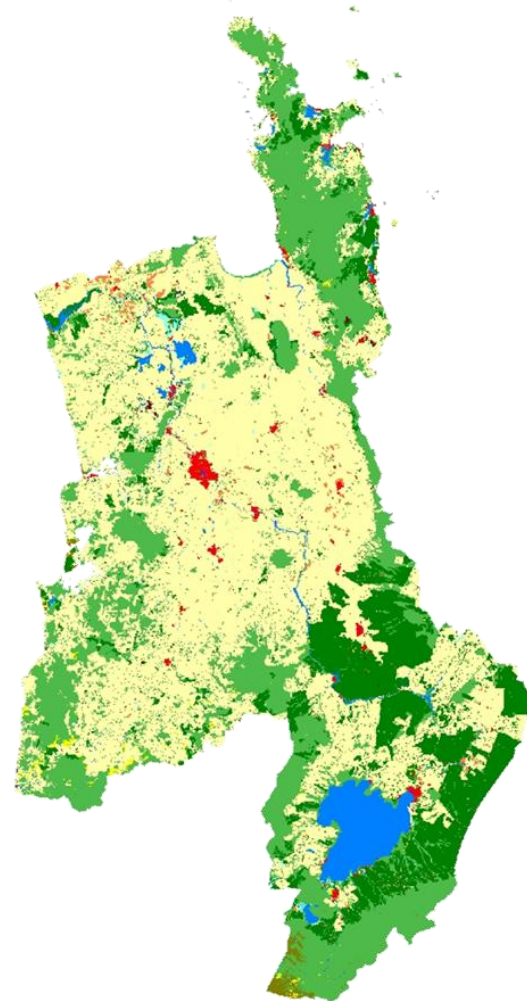
Multi-scale



Region



District

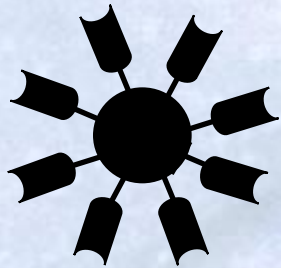


Local
(200 x 200 m cells)

Dynamic and Spatial Modelling

Source: RIKS 2006









Basic Framework

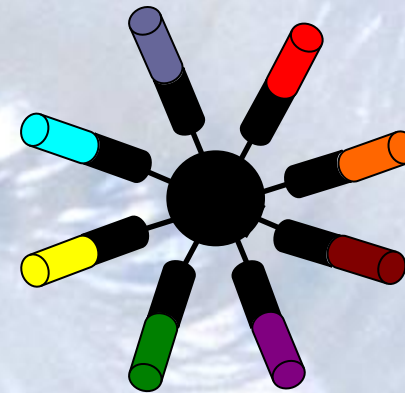


Geonamica



Model library:

-  Land use local level
-  Regional interaction
-  Transport
-  Population (Age cohort)
-  Plant growth
-  Climate
-  Hydrology
-  Input – Output (Economy-Environment)

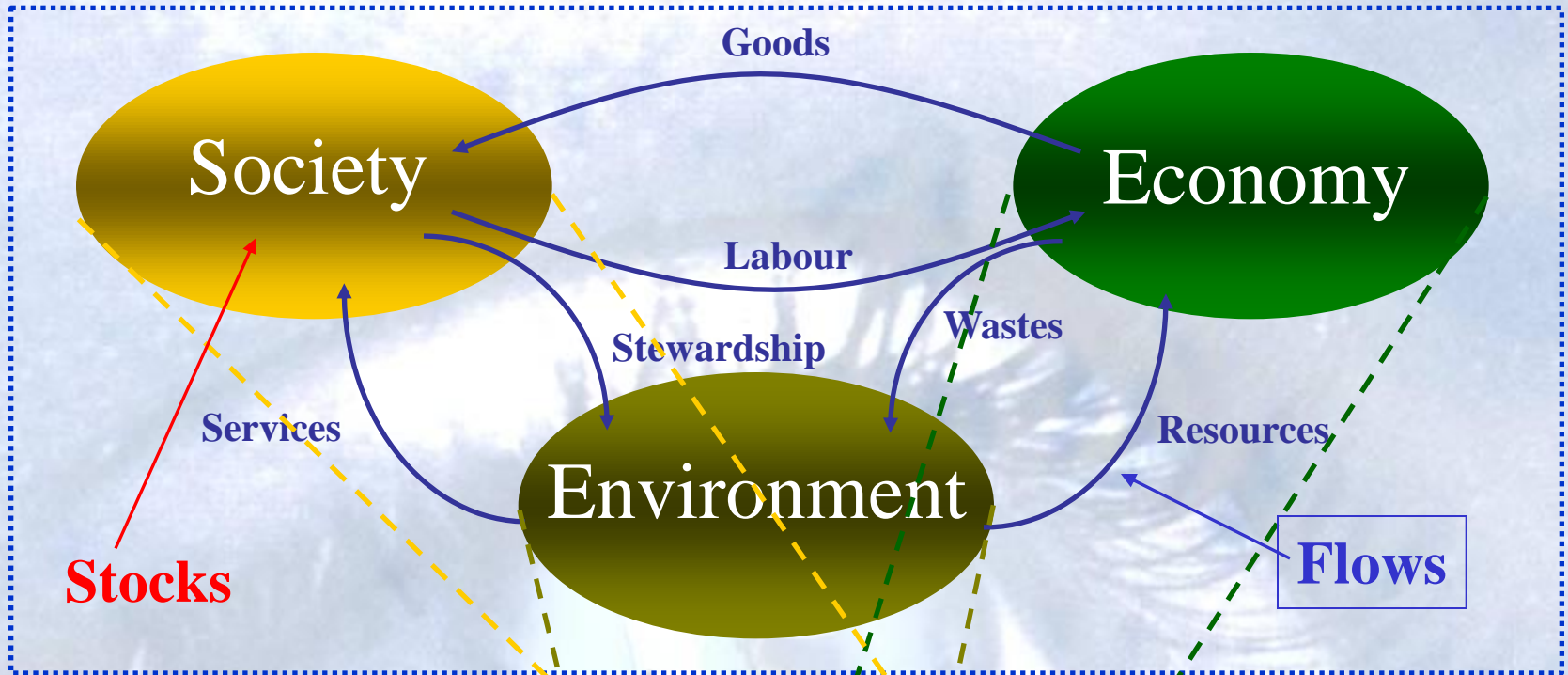


Product

WISE

Creating
Futures

Systems Approach



Spatially-Explicit

Dynamic

Creating
Futures

Step 2:
Understand
the past

Step 1:
Characterize
the present

Step 3:
Understand
past changes
& trends

Scenarios

Step 5:
Explore
possible futures

Step 4:
Identify
key drivers &
trends and
“model”
possible
future
scenarios

New Zealand
Land Cover
Pre-human
Estimate
(LENZ)

New Zealand
Land Cover
LCDB2
(2001/2)

Creating Futures

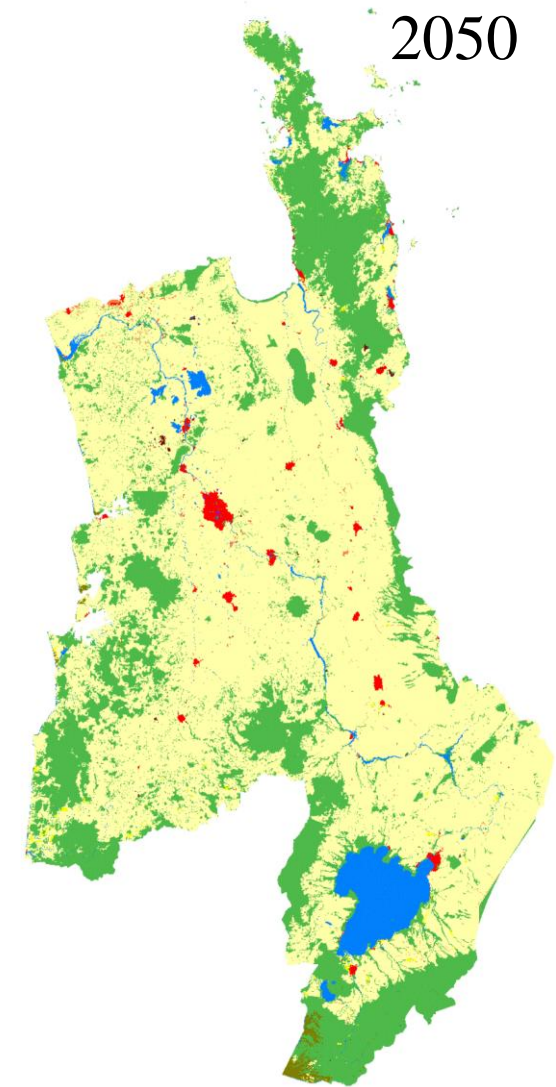
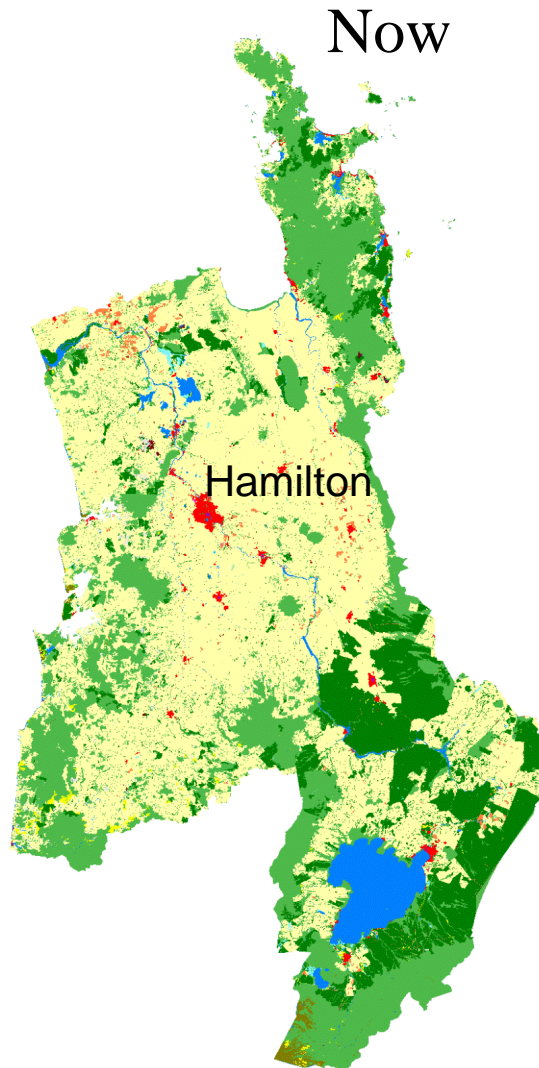
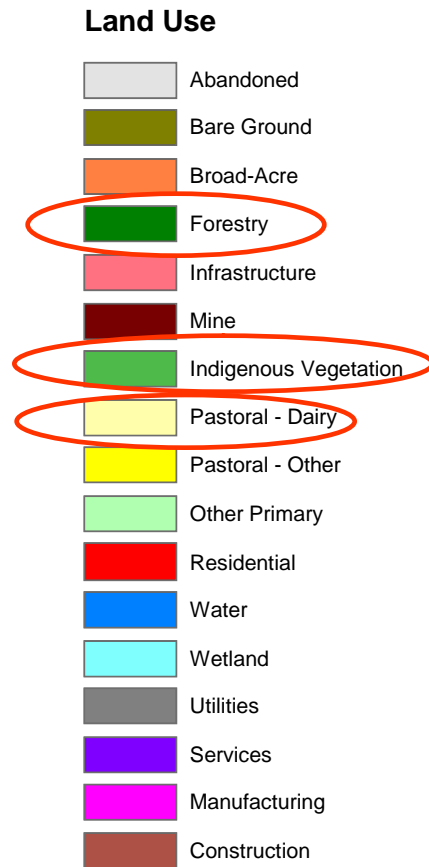


Waikato in 2050?

2014

what/if ?

Land for dairy farming increases ~4% annually



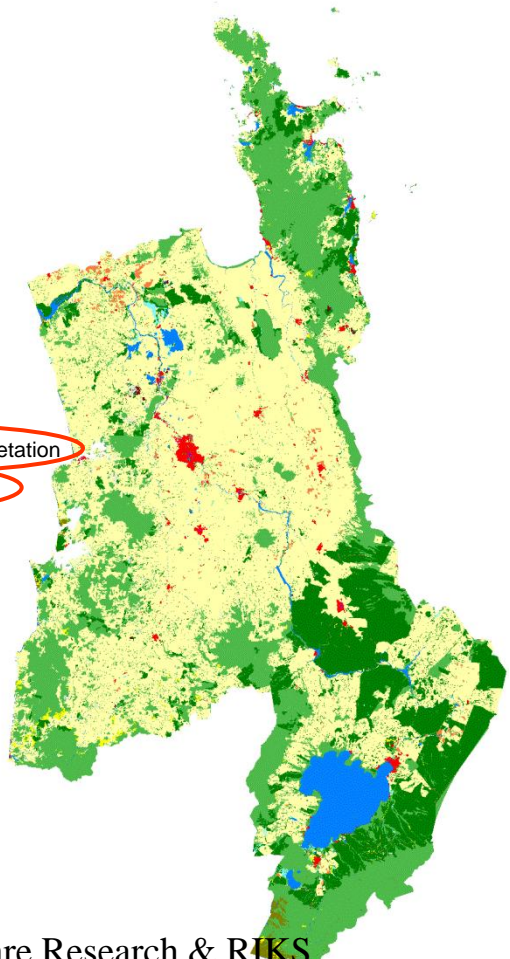
based on WISE
Prototype

Waikato in 2050 – Three Different Futures (*what/ifs?*)

(based on WISE Prototype)

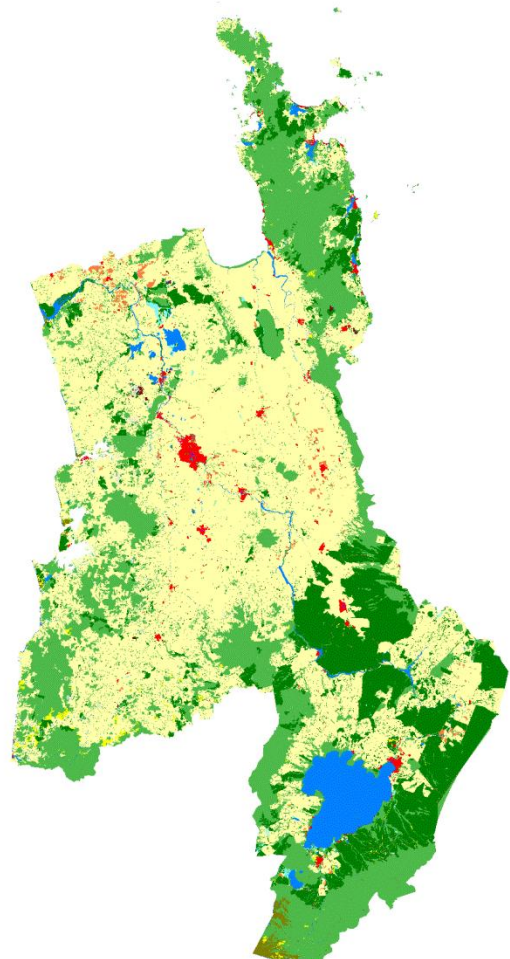
1-Dairy Expansion

Land for dairying increases ~4% annually



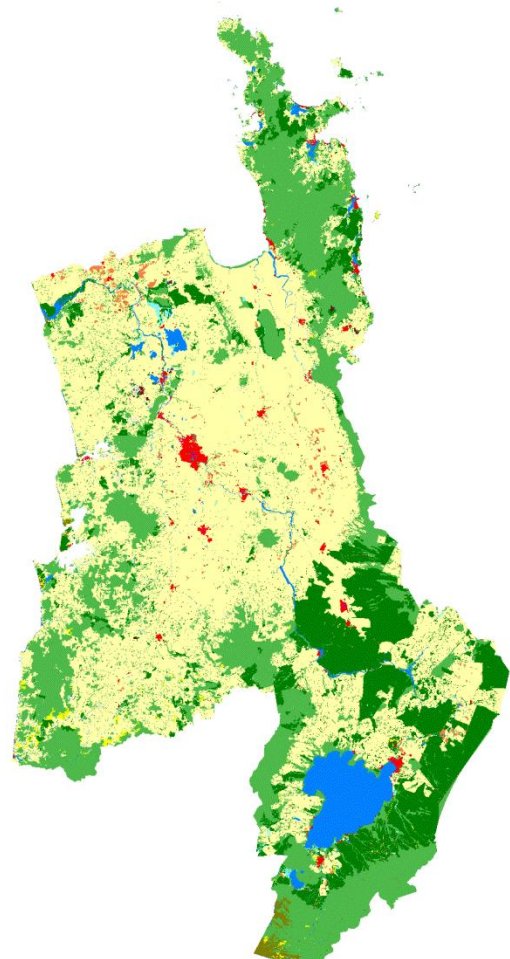
2-Diversification

Demand for non-dairy primary production land increases



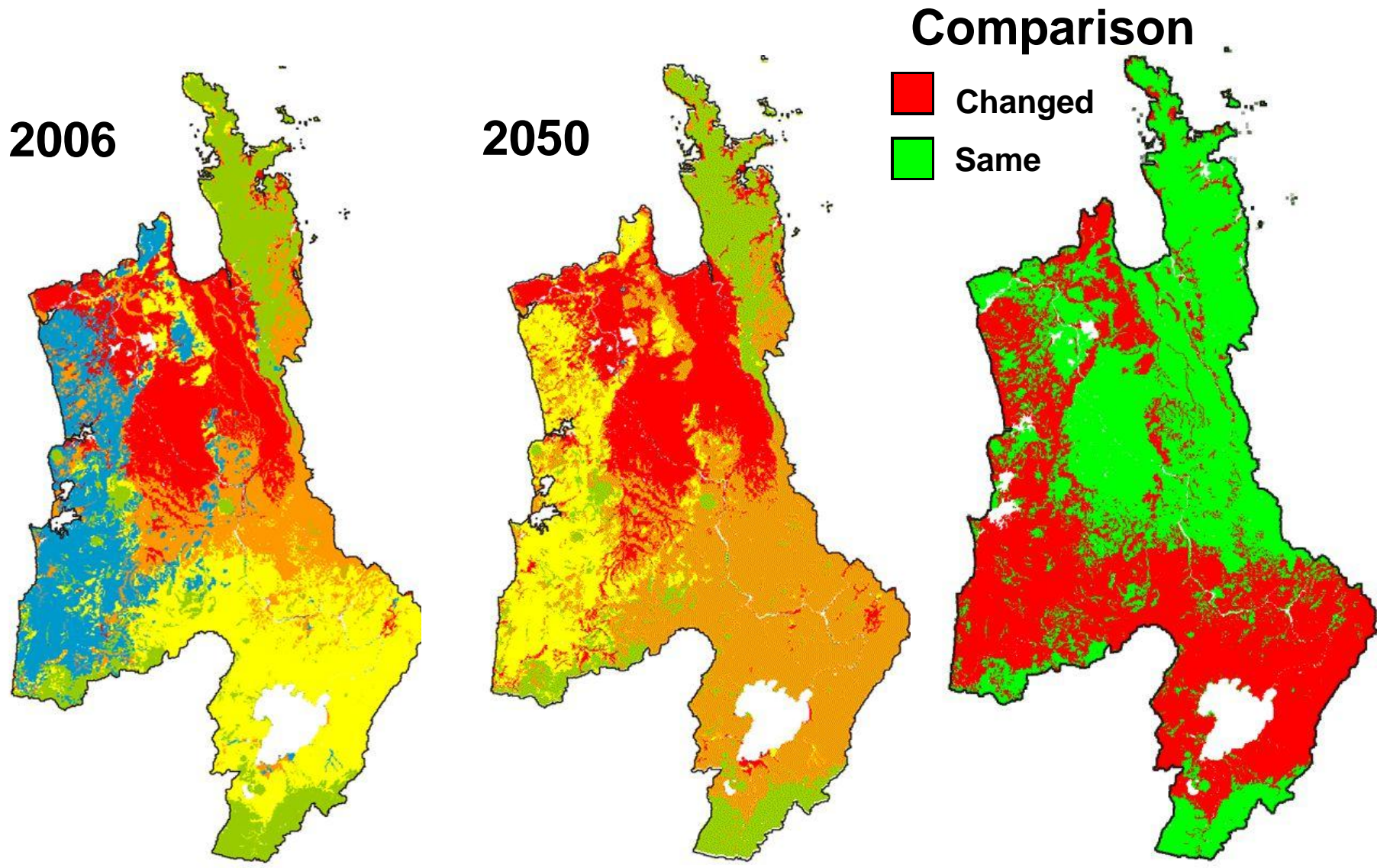
3-Village Life

Residential land increases 7-fold



- Land Use**
- Abandoned
 - Bare Ground
 - Broad-Acre
 - Forestry
 - Infrastructure
 - Mine
 - Indigenous Vegetation
 - Pastoral - Dairy
 - Pastoral - Other
 - Other Primary
 - Residential
 - Water
 - Wetland
 - Utilities
 - Services
 - Manufacturing
 - Construction

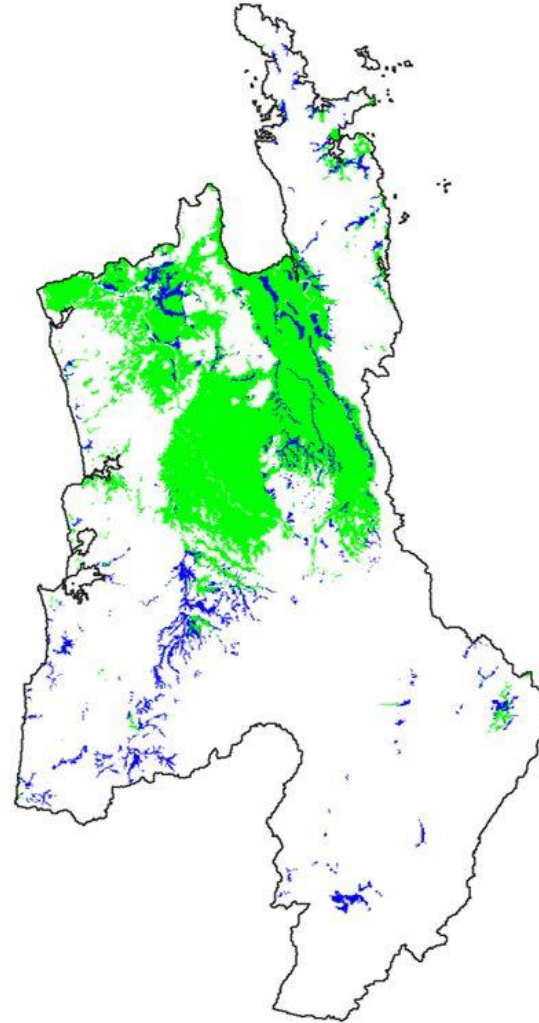
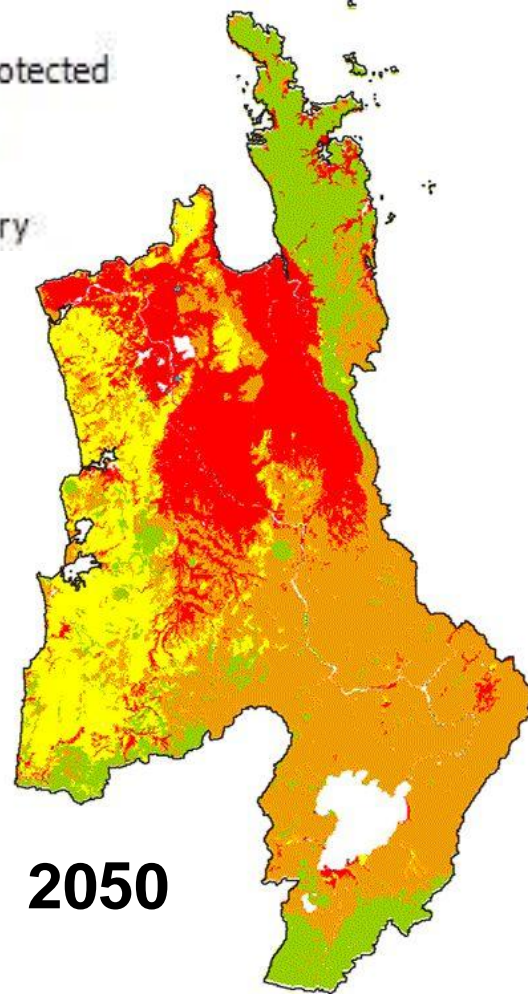
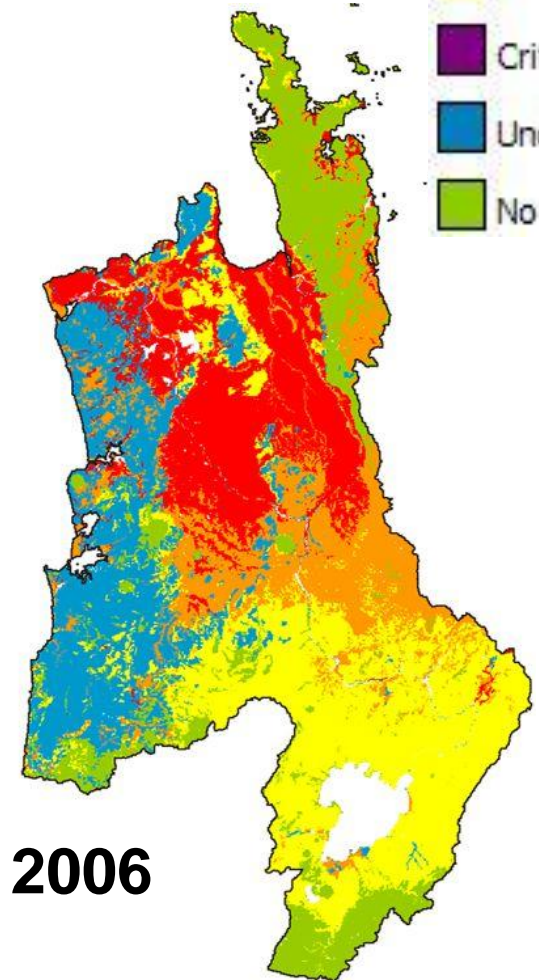
Threatened Environments for Baseline ('BAU') Scenario



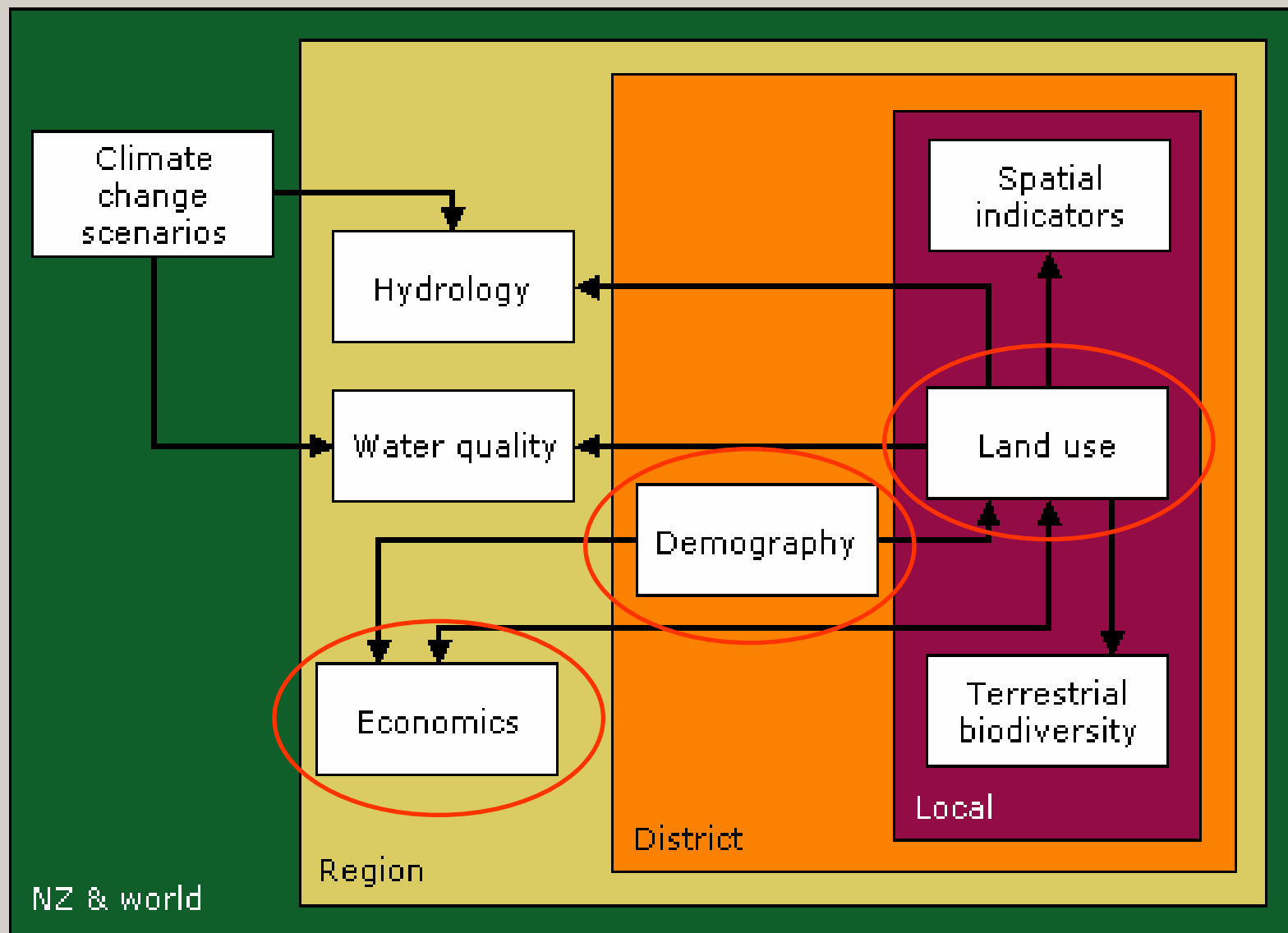
Threatened Environments – by Risk Categories for Baseline ('BAU') Scenario



New 'Acutely Threatened' Environments



WISE



Creating Futures



How Environment Waikato Uses WISE

- **Linking science to policy** (evidence-based decision-making)
- Explore alternative policy options for regional planning, assess **trade-offs** and prioritise issues
- **Regional** development and **sub-regional** strategies (non-statutory) – e.g. **Future Proof case study**
- **Cumulative** effects of policy and permits (over space/time)

WISE also provides:

- Up-to-date data and information
- Access to expert knowledge from all disciplines

Some Lessons Learnt

- for interdisciplinary multi-agency science/policy collaboration

- **Allow time at the start to develop shared understanding**
- **User interaction crucial during the development (champions)**
 - ✓ Ownership by user organisation (Environment Waikato)
 - ✓ Must add value (be useful) and accessible (user-friendly)
 - ✓ Understanding how models work and how they are linked
- **Time and effort for individual model components vs integration**
- **Develop implementation strategy to optimize end users buy-in**
 - ✓ Improving and understanding
 - ✓ Making WISE relevant (case studies), build credibility
 - ✓ Provide support: data management, training, set-up of scenarios
 - ✓ Collaboratively identify, prioritise and implement improvements

Future Directions

- **We are only just beginning...**
- **Strategic Scanning Team**
- **WISE User Group (policy, science, GIS/IT)**
 - External support and advise (WISE partners and others)
 - Data management, updating and maintenance of models, licences
 - Training – building capability and capacity in spatial planning
 - Integration into council planning and decision-making processes
- **WISE** development is ongoing
 - additional model components, functionality, new knowledge/methods
- **Other regions / NZ**
 - SP2 (Auckland and Wellington councils) – urban focus
 - National Advisory Group for spatial planning tools



About the Project

Creating Futures is a new and innovative 4-year research project aimed at creating tools for improving decision making. The research will develop and implement designed to inform communities about the long-term effects of current development patterns and trends. It also aims to enhance community involvement in choosing and planning for desired futures. >>

Project Outputs

The Creating Futures project is now two years into a four year research project. Progress in developing tools is provided in this section. Some additional information on the tools, their use, and the development process is also given. The three output areas are: >>

www.creatingfutures.org.nz

What's New

15 Jul **Waikato Futures Symposium**

New Zealand Trade and Enterprise in conjunction with Environment Waikato and partners are convening this Symposium to present and review work completed to date on developing future scenarios for the Waikato region. Symposium Flyer... >>

13 Jul **Deliberation Workshops**

In March 2008 the first of two deliberation workshops with Waikato stakeholders was held to develop deliberation methodologies. See Deliberation Workshop 1 Report [deliberation-tools]... >>

11 Jul **Narrative Stories**

Stories to help you imagine life in each of the Waikato (just completing draft stories - will link in before go live)... >>

10 Jul **Spatial Waikato Model**

Final specifications (report not quite complete)... >>

Further Resources

Project Team

[Structure](#)

[Roles](#)

[Contacts](#)

Scenarios

Scenarios are plausible stories about the future. They are stories that are sufficiently based on the trends and changes that we know are happening that they not only could possibly happen, but

Waikato Scenarios

Scenario Development

Thanks

- ✓ **FRST** – Foundation of Research Science & Technology
- ✓ **Environment Waikato**
- ✓ **Creating Futures partner organisations**

www.creatingfutures.org.nz