

# Waikato Projections 2018-2068

Combined Waikato Regional Forum, WRC, 26 February 2021



# Waikato Projections Group



Updates  
Meeting notes  
Projection data

Creating  
Futures : WISE

Download WISE

Contact Us

Go

Home

WISE

Reference Scenario

Waikato Projections

Case Studies

Resources

What's New

Projections Working Group

2013 Projections Outputs

## Waikato Projections - Demographic and Economic

There is a need for consistent and defensible future projections of demographic and economic indicators by the territorial authorities in the Waikato to assist in their long term planning. Results have previously been available at the District level through a range of modelling/assessment approaches.

The objective of this work was to provide consistent outputs across the region for the key indicators (Land use, Population, Households, Workforce, Employment, Value Added) down to a statistical area level 2 (SA2) scale.

### Planned Update for 2018 Waikato Projections

Work is underway to update the Waikato Projections to 2018-2063 based on the outputs from the 2018 census. census are planned for completion in 2020 pending the release of required data from 2018 census by Stats NZ.

Follow progress on this update on the [Working Group Page](#).

The modelling to create SA2 level projections will follow the same methodology used in the 2013 projections as outlined below.

### 2013 Waikato Projections

[Access Data or View Results](#)

[Download Reports with methodologies and results](#)

This work was to provide outputs for the key indicators down to a census area unit (CAU) level (now termed SA2). Initial work on this projection approach was started in 2015. The results presented here are from the latest round of modelling



Healthy environment

Strong economy

Vibrant communities

[www.creatingfutures.org.nz](http://www.creatingfutures.org.nz)

# What Projections?

**By TA / SA2 (small area units)**

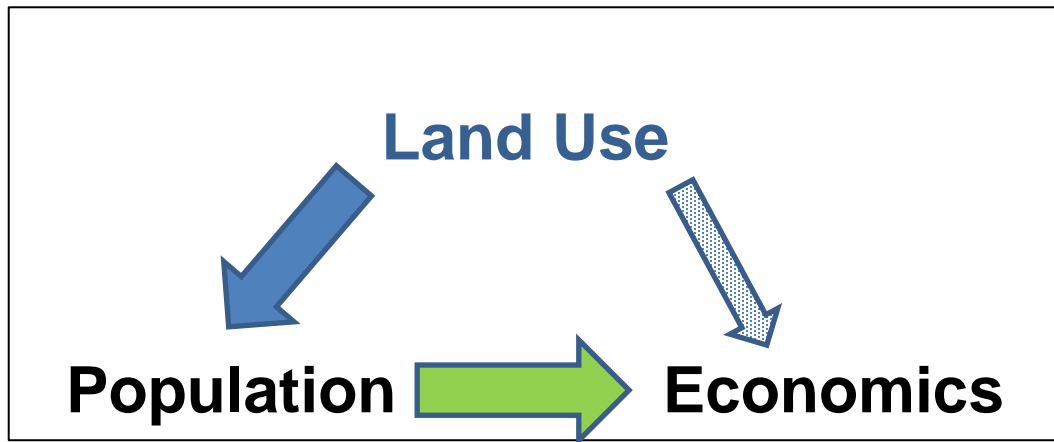
- **Land Use** (by 25 land use classes, 100mx100m)
- **Population** (by gender/age cohorts) / (total)
- **Households** (by household type) / (total)
- **Labour force**
- **Employment** (MECs)
- **Value Added** (\$m)

**Time horizon: 50 years (2018-2068)**

**Delivered by March 2021**

Shared and common evidence-base to facilitate collaborative, robust and consistent planning and decision-making

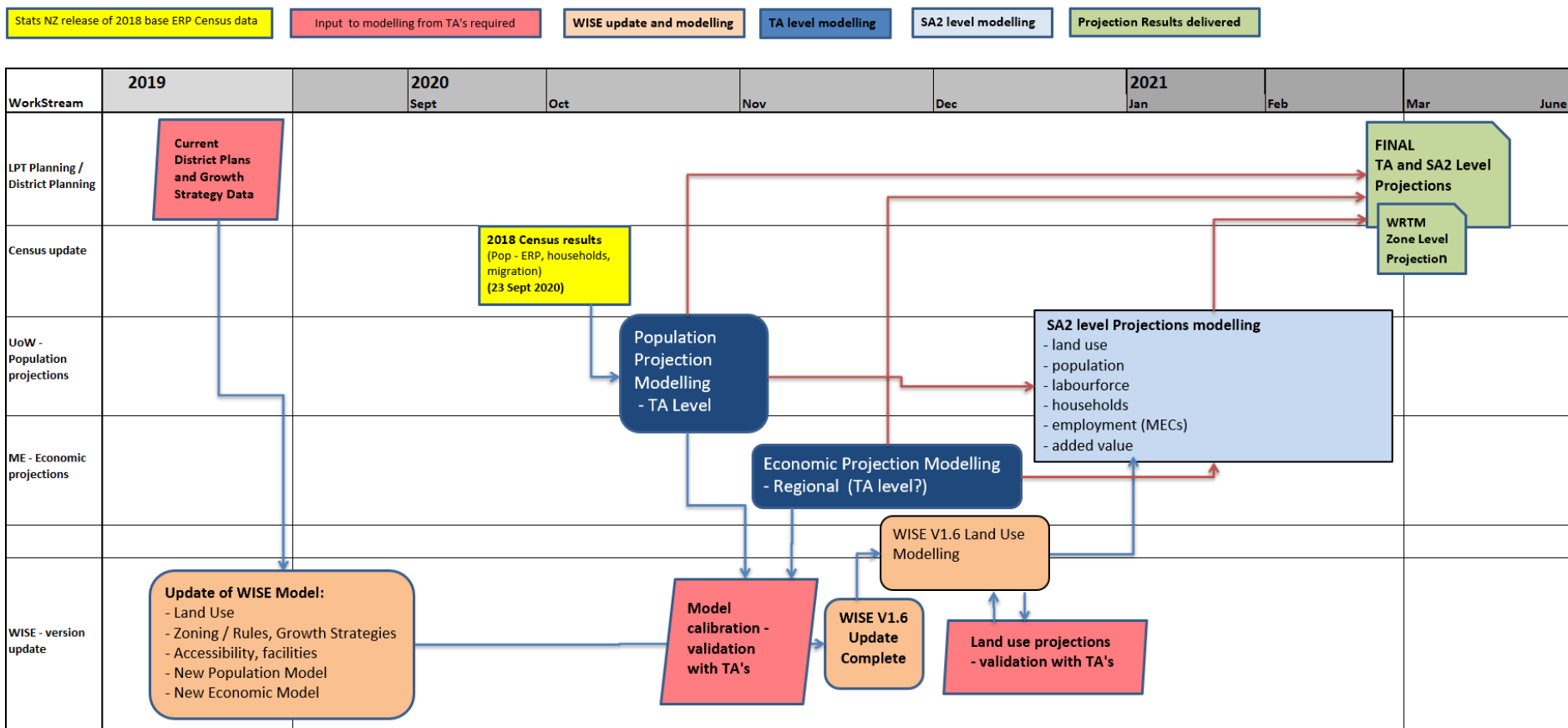
# Process (*simplified*)



- **Land Use** – Waikato Regional Council (WISE/Alchemists Ltd)
- **Economic** – Market Economics Ltd (WISE/economic model)
- **Population** - University of Waikato (WISE/demographic models)

# Timeline

## Waikato Projections - Timeline version 4 (16 July 2020)

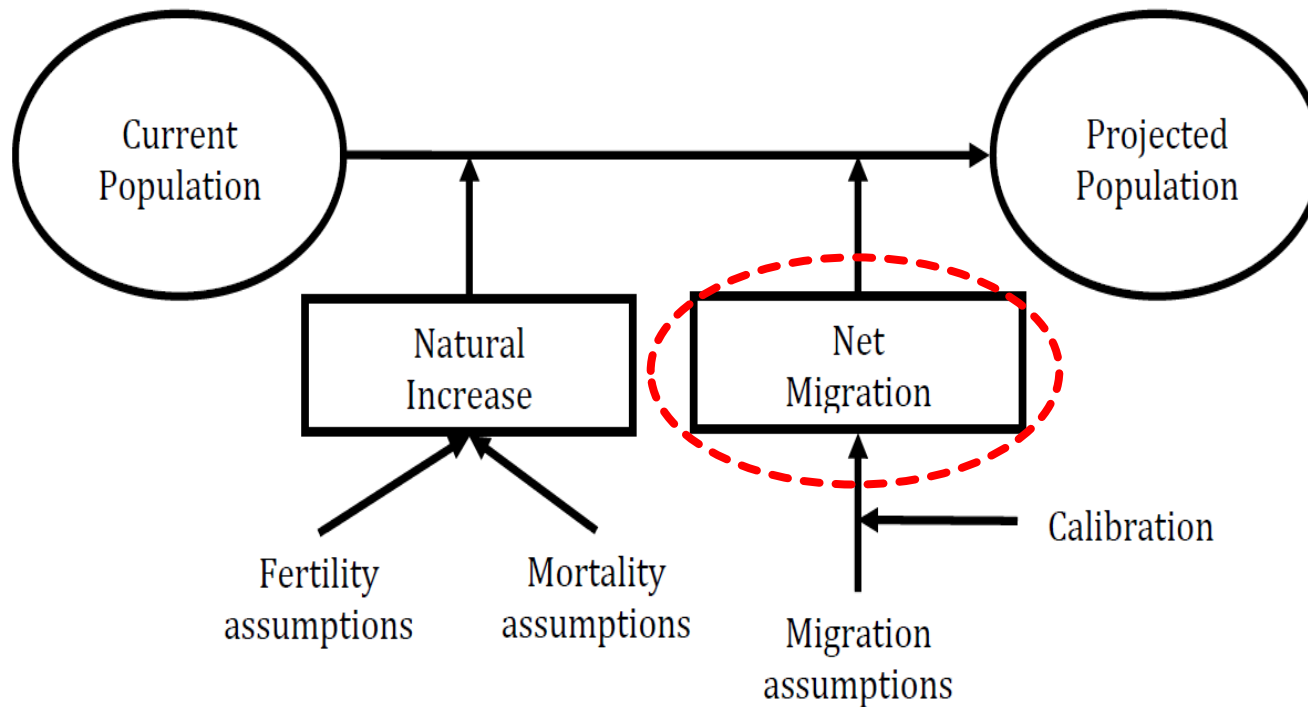


Healthy environment

Strong economy

Vibrant communities

# Waikato Population Model (NIDEA)

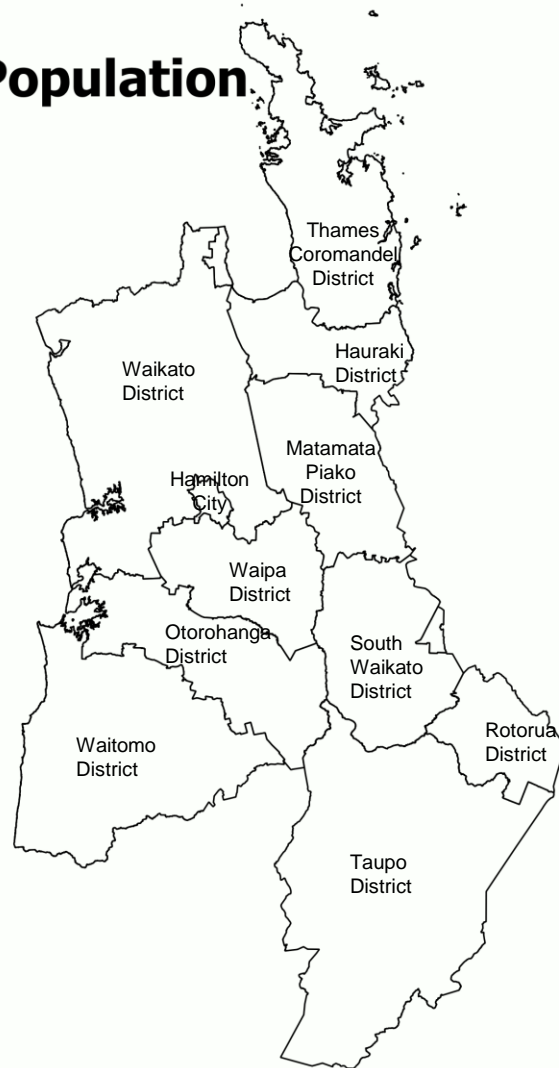
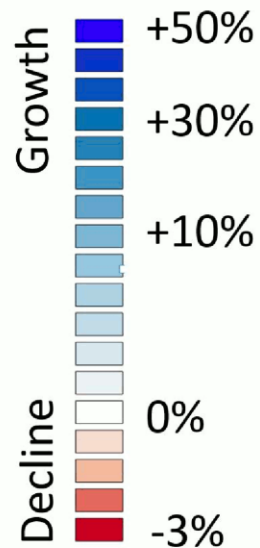




# Changes in Waikato Population

## 2018

Change from  
2018 Population



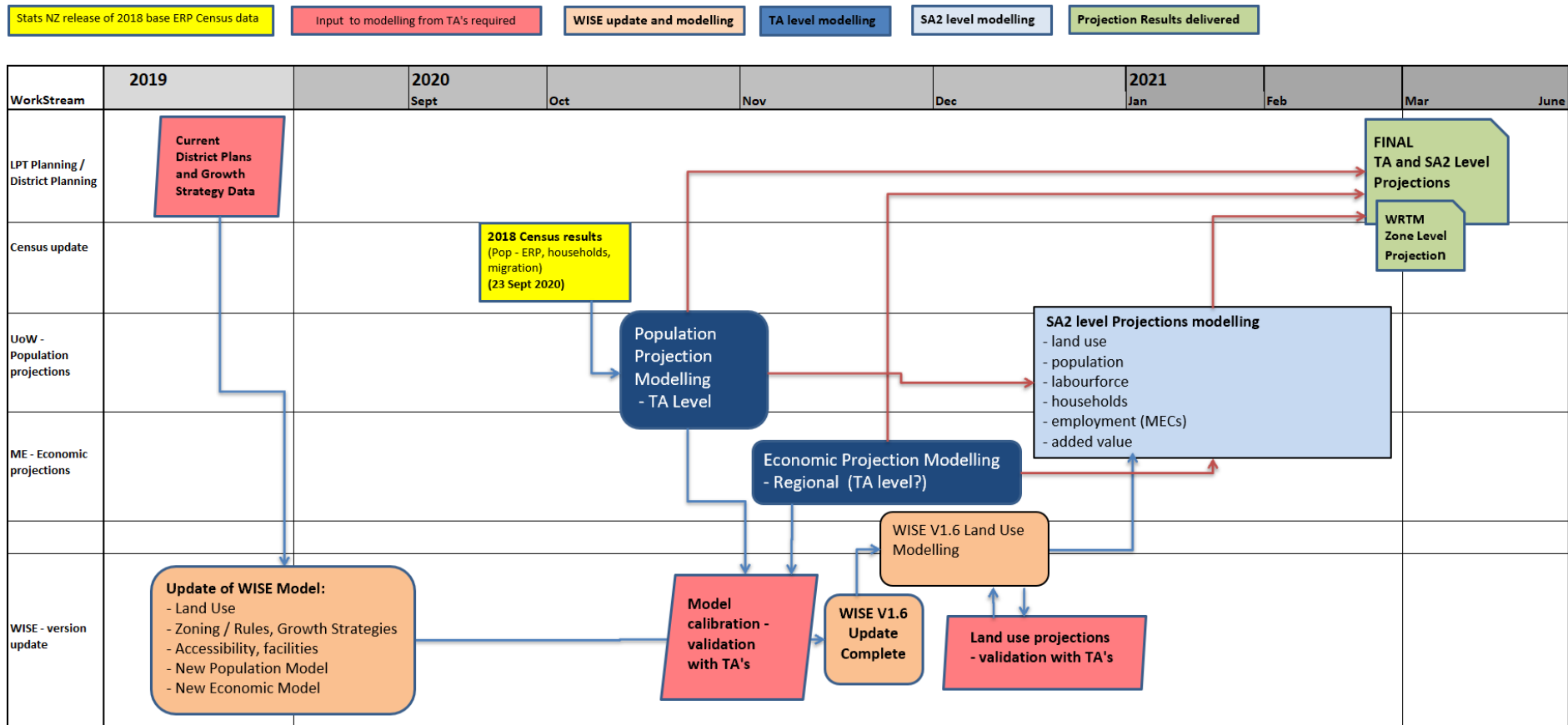
Healthy environment

Strong economy

Vibrant communities

# Timeline

## Waikato Projections - Timeline version 4 (16 July 2020)

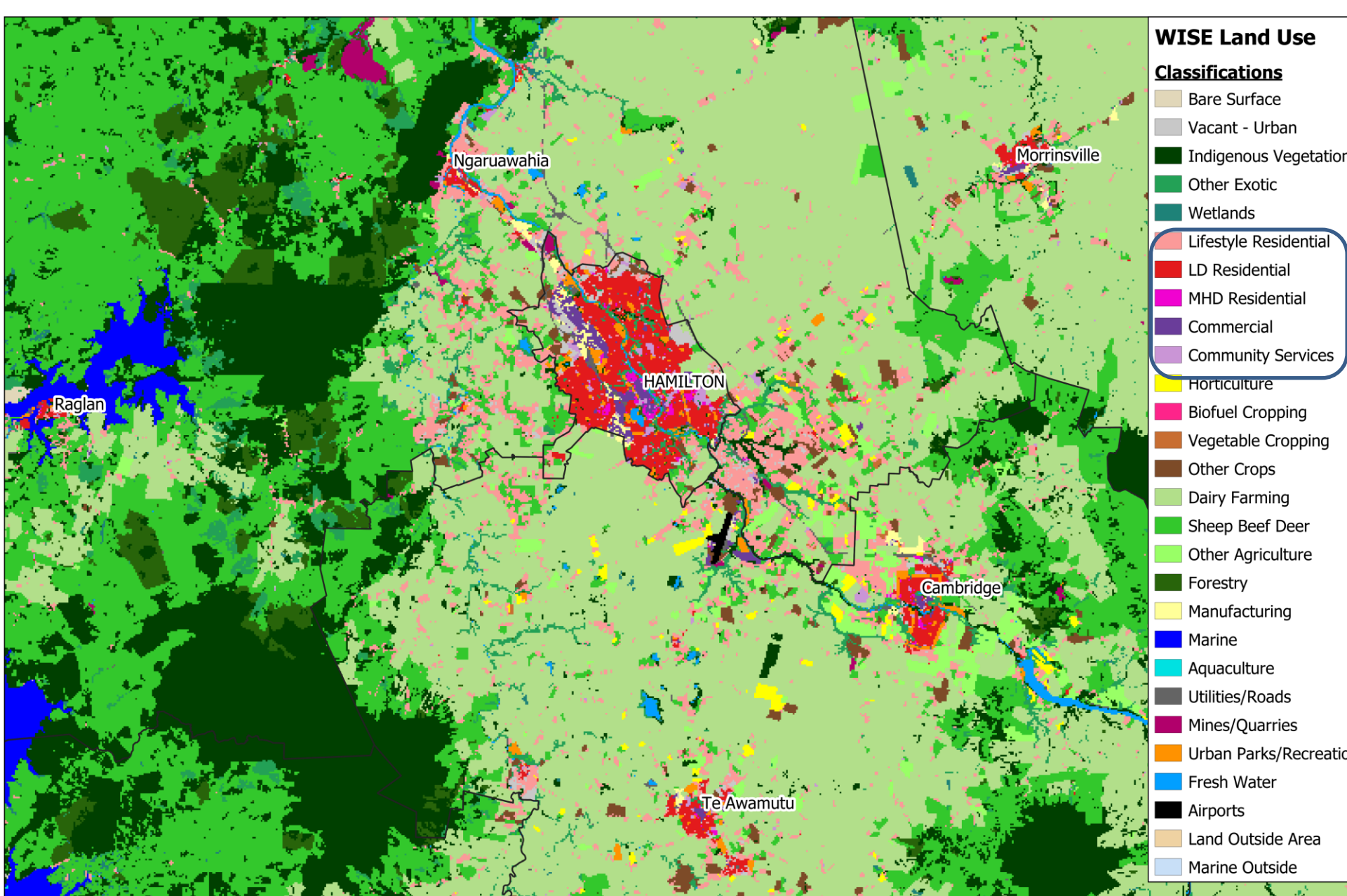


Healthy environment

Strong economy

Vibrant communities





**WISE 2018 Land Use Map - Central Waikato**

0 5 10 15 km

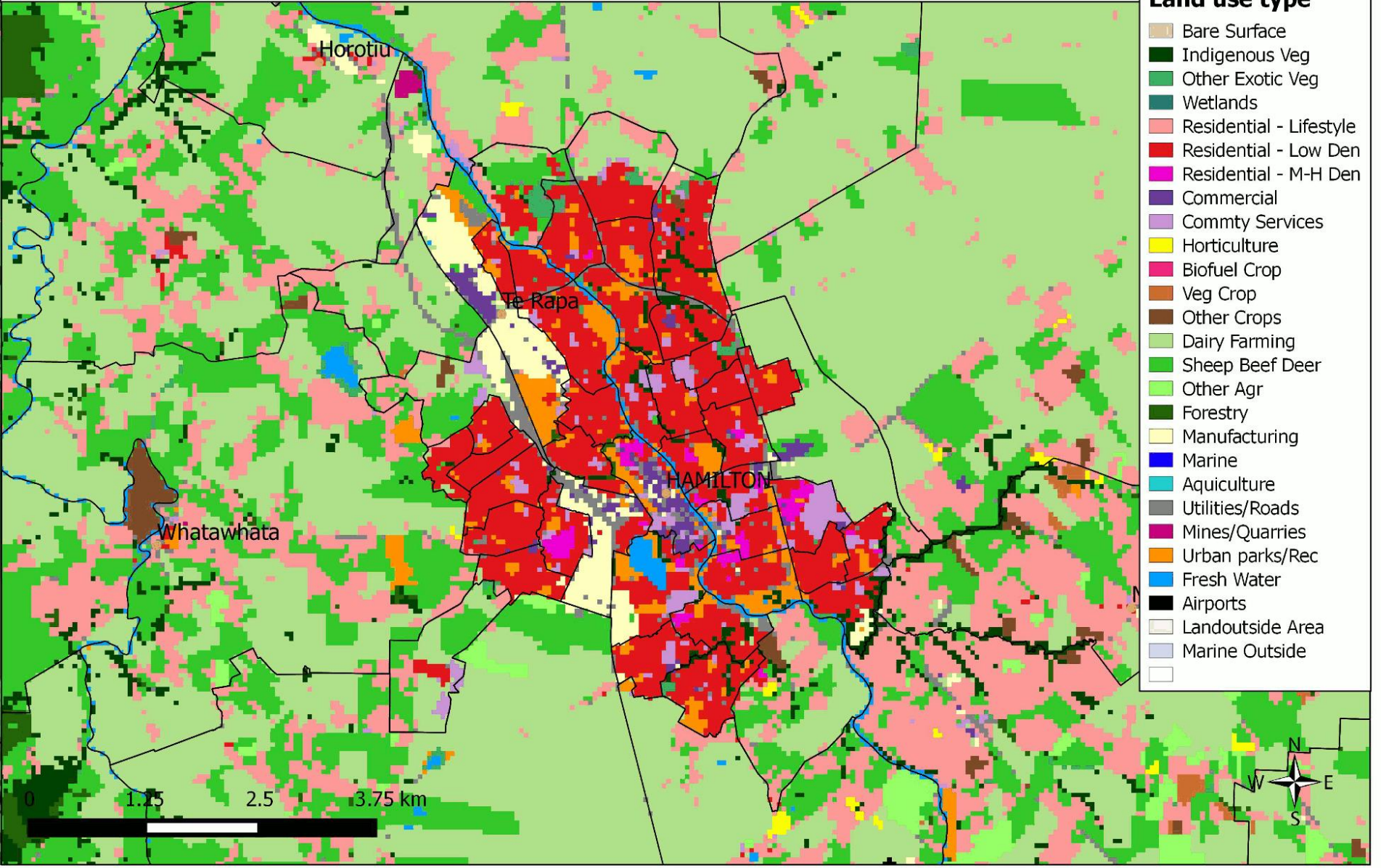


**Future Proof "Medium Population Growth" Scenario Oct-2016**  
**Land Use Map - 2013 - Hamilton**

**Legend**

**Land use type**

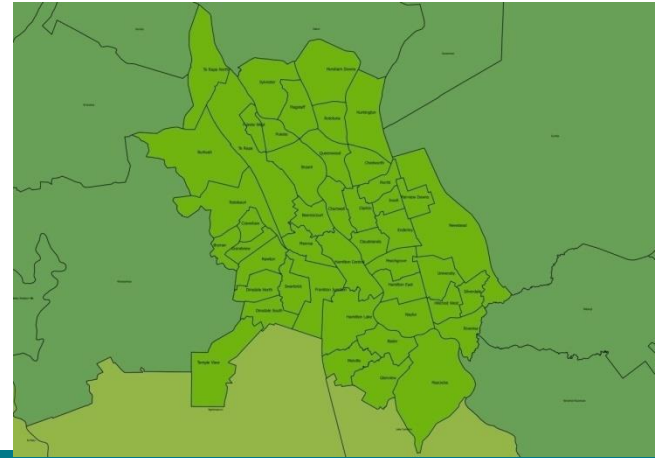
- Bare Surface
- Indigenous Veg
- Other Exotic Veg
- Wetlands
- Residential - Lifestyle
- Residential - Low Den
- Residential - M-H Den
- Commercial
- Commtty Services
- Horticulture
- Biofuel Crop
- Veg Crop
- Other Crops
- Dairy Farming
- Sheep Beef Deer
- Other Agr
- Forestry
- Manufacturing
- Marine
- Aquiculture
- Utilities/Roads
- Mines/Quarries
- Urban parks/Rec
- Fresh Water
- Airports
- Landoutside Area
- Marine Outside





# Use of Projections

- LTPs, RPS, Regional/District Plans
- Infrastructure and Asset Management Plans
- Transport planning (**WRTM**, RLTP, RPTP, NZTA)
- Non-statutory strategic planning (Waikato Plan, Future Proof/Metro Plan, Sea Change, Econ Development, regional spatial plan (??))
- Community profiles:
  - ✓ regional
  - ✓ district/city
  - ✓ local



# Spatial Scale of Information

REGIONAL

DISTRICT

SA2

PARCEL

Scenario Land Use Outcomes (annual)

Rural

Comm./Manf.

Residential

GIS  
Processing

Land Use  
Projections  
by SA2

Land Use Demand

Zoning  
(Regional)

Zoning  
(District)

WISE Model  
(WRC)

SA2 Disaggregation  
Population /  
employment\*  
Projections

other input  
data

Suitability  
(land use)

Waikato Regional Transport Model  
(WRTM)

Economic  
Projections  
(Market Economics)

Population  
Projections  
(UoW)

Healthy environment

Access

(Roads - current and planned)

\* WISE projects employment as Modified Employment Counts (MEC's) based on StatsNZ Business Frame data. WTRM uses StatsNZ Census employment data. Calibration of projections required to utilise